

Product datasheet for **AP20470PU-N**

5 HT1F (HTR1F) Rabbit Polyclonal Antibody

Product data:

Product Type:	Primary Antibodies
Applications:	IF, WB
Recommended Dilution:	Western blot: 1/500 - 1/1000. Immunofluorescence: 1/50 - 1/200.
Reactivity:	Human, Mouse, Rat
Host:	Rabbit
Clonality:	Polyclonal
Specificity:	This antibody detects endogenous levels of SR-1F protein. (region surrounding Thr126)
Formulation:	Phosphate buffered saline (PBS) with 0.05% sodium azide, approx. pH 7.2. State: Aff - Purified State: Liquid purified Ig fraction
Concentration:	1.0 mg/ml
Purification:	Affinity chromatography (> 95% (by SDS-PAGE)
Conjugation:	Unconjugated
Storage:	Store undiluted at 2-8°C for one month or (in aliquots) at -20°C for longer. Avoid repeated freezing and thawing.
Stability:	Shelf life: one year from despatch.
Predicted Protein Size:	~ 38 kDa
Gene Name:	5-hydroxytryptamine receptor 1F
Database Link:	Entrez Gene 15557 Mouse Entrez Gene 60448 Rat Entrez Gene 3355 Human P30939



[View online »](#)

Background:

The members of the G protein-coupled receptor family are distinguished by their slow transmitting response to ligand binding. These seven transmembrane proteins include the adrenergic, serotonin and dopamine receptors. The effect of the signaling molecule can be excitatory or inhibitory depending on the type of receptor to which it binds. beta-adrenergic bound to adrenaline activates adenylyl cyclase, while alpha2-adrenergic receptor bound to adrenaline inhibits adenylyl cyclase. Like the alpha2-adrenergic receptor, serotonin receptor functions are also mediated by G proteins that inhibit the activity of adenylyl cyclase. The serotonin receptors have been classified into several categories, designated SR-1-7 (5HT1-7). Subtypes within the SR-1 group include SR-1A, -1B, -1D, -1E and -1F.

Synonyms:

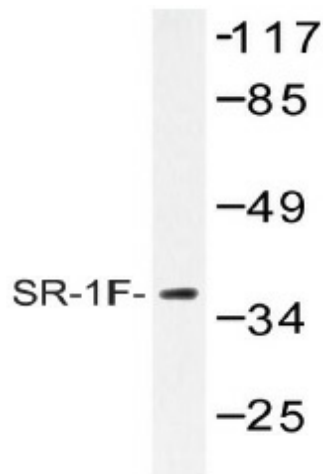
5-hydroxytryptamine receptor 1F, HTR1EL, 5-HT-1F

Protein Families:

Druggable Genome, GPCR, Transmembrane

Protein Pathways:

Neuroactive ligand-receptor interaction

Product images:

Western blot (WB) analysis of SR-1F antibody (Cat.-No.: AP20470PU-N) in extracts from COS-7 cells.