

Product datasheet for **AP20468PU-M**

14-3-3 zeta (YWHAZ) Rabbit Polyclonal Antibody

Product data:

Product Type:	Primary Antibodies
Applications:	IHC, WB
Recommended Dilution:	Western Blot: 1/500 - 1/1000. Immunohistochemistry on Paraffin Sections: 1/50 - 1/200.
Reactivity:	Human, Mouse, Rat
Host:	Rabbit
Clonality:	Polyclonal
Immunogen:	Synthetic peptide, corresponding to amino acids 49-100 of Human 14-3-3 ζ.
Specificity:	This antibody detects endogenous levels of 14-3-3 ζ protein. (region surrounding Ala79)
Formulation:	Phosphate Buffered Saline (PBS), pH~7.2 State: Aff - Purified State: Liquid purified Ig fraction (> 95% pure by SDS-PAGE) Preservative: 0.05% Sodium Azide
Concentration:	1.0 mg/ml
Purification:	Affinity Chromatography using epitope-specific immunogen
Conjugation:	Unconjugated
Storage:	Store undiluted at 2-8°C for one month or (in aliquots) at -20°C for longer. Avoid repeated freezing and thawing.
Stability:	Shelf life: one year from despatch.
Predicted Protein Size:	~28 kDa
Gene Name:	tyrosine 3-monooxygenase/tryptophan 5-monooxygenase activation protein zeta
Database Link:	Entrez Gene 22631 Mouse Entrez Gene 25578 Rat Entrez Gene 7534 Human P63104



[View online »](#)

Background:

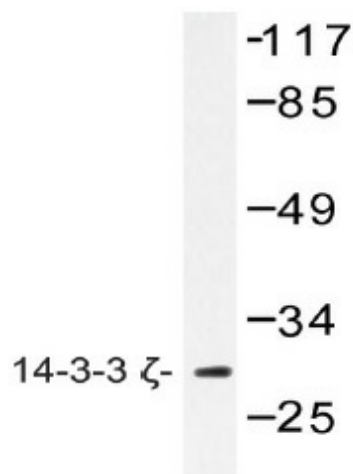
14-3-3 proteins regulate many cellular processes relevant to cancer biology, notably apoptosis, mitogenic signaling and cell-cycle checkpoints. Seven isoforms comprise this family of signaling intermediates, denoted 14-3-3 beta, gamma, theta, epsilon, zeta, sigma and nu. 14-3-3 proteins function in broad regulation of these ligand proteins, by cytoplasmic sequestration, occupation of interaction domains and import/export sequences, prevention of degradation, activation/repression of enzyme activity etc.

Synonyms:

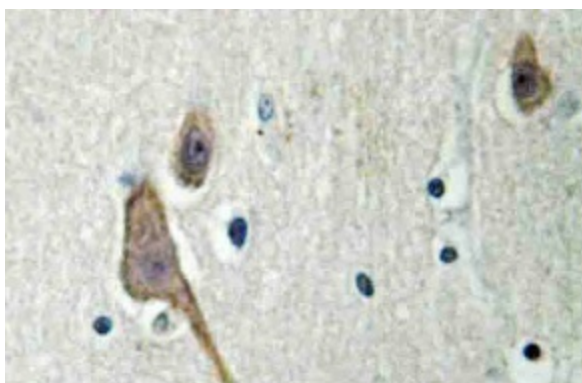
YWHAZ, KCIP-1

Protein Pathways:

Cell cycle, Neurotrophin signaling pathway, Oocyte meiosis, Pathogenic Escherichia coli infection

Product images:


Western blot (WB) analysis of 14-3-3 zeta antibody in extracts from HeLa cells.



Immunohistochemistry (IHC) analyzes of 14-3-3 zeta antibody in paraffin-embedded human brain tissue.