

Product datasheet for **AP20465PU-S**

CDC42 Binding Protein Kinase Beta (CDC42BPB) Rabbit Polyclonal Antibody

Product data:

Product Type:	Primary Antibodies
Applications:	IHC, WB
Recommended Dilution:	Western blot: 1/500 - 1/1000. Immunohistochemistry on paraffin sections 1/50 - 1/200.
Reactivity:	Human, Mouse, Rat
Host:	Rabbit
Clonality:	Polyclonal
Specificity:	This antibody detects endogenous levels of MRCKbeta protein. (region surrounding Phe1665)
Formulation:	Phosphate buffered saline (PBS) with 0.05% sodium azide, approx. pH 7.2. State: Aff - Purified State: Liquid purified Ig fraction
Concentration:	1.0 mg/ml
Purification:	Affinity chromatography (> 95% (by SDS-PAGE)
Conjugation:	Unconjugated
Storage:	Store undiluted at 2-8°C for one month or (in aliquots) at -20°C for longer. Avoid repeated freezing and thawing.
Stability:	Shelf life: one year from despatch.
Predicted Protein Size:	~ 194 kDa
Gene Name:	CDC42 binding protein kinase beta
Database Link:	Entrez Gene 113960 Rat Entrez Gene 217866 Mouse Entrez Gene 9578 Human Q9Y5S2



[View online »](#)

Background:

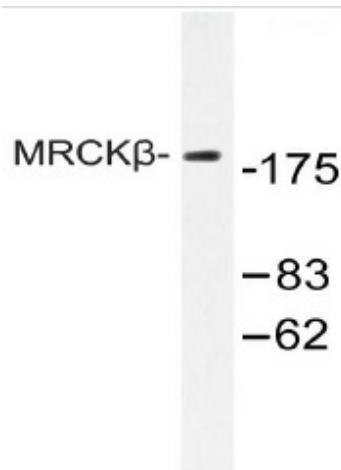
Protein kinases comprise a large group of encoded factors that regulate cellular processes by catalyzing the transfer of a phosphate group to a hydroxyl acceptor in serine, threonine or tyrosine residues. Myotonic dystrophy kinaserelated Cdc42-binding (DMPK-like) kinases-alpha and beta (MRCK-alpha, beta) contain a cysteine-rich motif and a putative pleckstrin homology domain. MRCKs can phosphorylate nonmuscle Myosin light chain and influences Actin-Myosin contractility. MRCK-alpha can phosphorylate and activate LIM kinases downstream of Cdc42, which leads to inactivation of ADF/Cofilin and to Actin cytoskeletal reorganization. MRCK-alpha can also influence neurite outgrowth promoted by Cdc42 and Rac.

Synonyms:

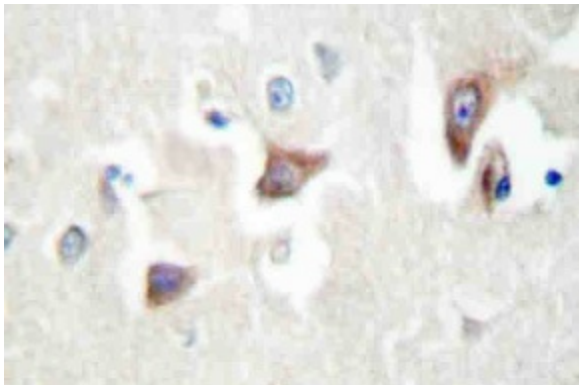
MRCK beta, KIAA1124, DMPK-like beta

Protein Families:

Druggable Genome, Protein Kinase

Product images:

Western blot (WB) analysis of MRCKβ antibody (Cat.-No.: [AP20465PU-N]) in extracts from COLO cell.



Immunohistochemistry (IHC) analyzes of MRCKbeta antibody (Cat.-No.: [AP20465PU-N]) in paraffin-embedded human brain tissue.