

Product datasheet for **AP20461PU-S**

CSNK1G1 Rabbit Polyclonal Antibody

Product data:

Product Type:	Primary Antibodies
Applications:	IF, IHC, WB
Recommended Dilution:	Western blot: 1/500 - 1/1000. Immunohistochemistry on paraffin sections 1/50 - 1/200. Immunofluorescence: 1/50 - 1/200.
Reactivity:	Human, Mouse, Rat
Host:	Rabbit
Clonality:	Polyclonal
Specificity:	This antibody detects endogenous levels of Casein Kinase Igamma1 protein. (region surrounding His3)
Formulation:	Phosphate buffered saline (PBS) with 0.05% sodium azide, approx. pH 7.2. State: Aff - Purified State: Liquid purified Ig fraction
Concentration:	1.0 mg/ml
Purification:	Affinity chromatography (> 95% (by SDS-PAGE)
Conjugation:	Unconjugated
Storage:	Store undiluted at 2-8°C for one month or (in aliquots) at -20°C for longer. Avoid repeated freezing and thawing.
Stability:	Shelf life: one year from despatch.
Predicted Protein Size:	~ 49 kDa
Gene Name:	casein kinase 1 gamma 1
Database Link:	Entrez Gene 64086 Rat Entrez Gene 214897 Mouse Entrez Gene 53944 Human Q9HCPO



[View online »](#)

Background:

Casein kinase I (also designated CKI) and casein kinase II (also designated CKII) compose a family of serine/ threonine protein kinases which are present in all eukaryotes examined to date. CKI family members, which include CKIalpha, gamma, epsilon and delta, have been implicated in the control of cytoplasmic and nuclear processes, including DNA replication and repair. CKII is usually expressed as a tetrameric complex consisting of either an alpha2-beta2 or an alpha-alpha'beta2 structure. The alpha catalytic subunit is stimulated by the beta regulatory subunit, which undergoes autophosphorylation. CKII activity is high in the cytosol and nucleus of proliferating and differentiating cells. CKII is known to phosphorylate more than 100 different substrates including nuclear oncoproteins, transcription factors and enzymes involved in DNA metabolism.

Synonyms:

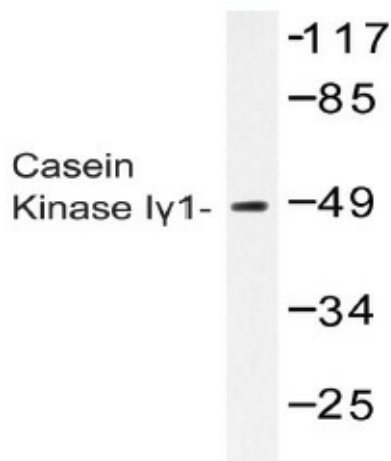
Casein kinase I isoform gamma-1, CKI-gamma 1

Protein Families:

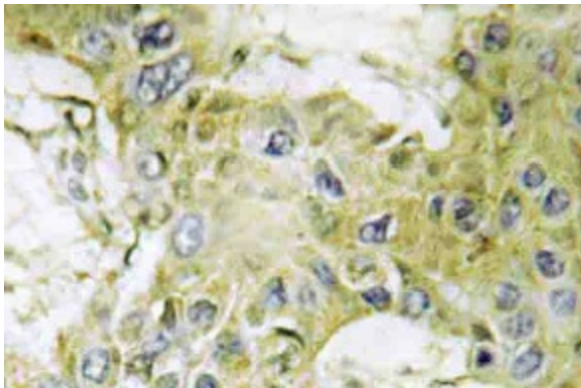
Druggable Genome, Protein Kinase

Protein Pathways:

Hedgehog signaling pathway

Product images:

Western blot (WB) analysis of Casein Kinase I gamma1 antibody (Cat.-No.: [AP20461PU-N]) in extracts from COS-7 cells.



Immunohistochemistry (IHC) analyzes of Casein Kinase I gamma1 antibody (Cat.-No.: [AP20461PU-N]) in paraffin-embedded human brain tissue.