

Product datasheet for **AP20458PU-N**

SHARP1 (BHLHE41) Rabbit Polyclonal Antibody

Product data:

Product Type:	Primary Antibodies
Applications:	IHC, WB
Recommended Dilution:	Western blot: 1/500-1/1000. Immunohistochemistry on Paraffin Sections: 1/50-1/200.
Reactivity:	Human, Mouse, Rat
Host:	Rabbit
Clonality:	Polyclonal
Immunogen:	Synthetic peptide around Lys31 of Human BHLHE41 / BHLHB3
Specificity:	This antibody detects endogenous levels of DEC2 protein. (region surrounding Lys31)
Formulation:	PBS, pH~7.3 State: Aff - Purified State: Liquid purified Ig fraction (> 95% by SDS-PAGE) Preservative: 0.05% Sodium Azide
Concentration:	1.0 mg/ml
Purification:	Affinity Chromatography using epitope-specific immunogen
Conjugation:	Unconjugated
Storage:	Store undiluted at 2-8°C for one month or (in aliquots) at -20°C for longer. Avoid repeated freezing and thawing.
Stability:	Shelf life: one year from despatch.
Predicted Protein Size:	~ 50 kDa
Gene Name:	basic helix-loop-helix family member e41
Database Link:	Entrez Gene 79362 Mouse Entrez Gene 117095 Rat Entrez Gene 79365 Human Q9C0J9



[View online »](#)

Background:

Human DEC1 is a 412 amino acid, basic helix-loop-helix (bHLH) containing protein that is involved in the control of proliferation and/or differentiation of several cell types including nerve cells, fibroblasts and chondrocytes. The bHLH region of DEC1 is structurally similar to the bHLH regions of the mammalian HES family, Drosophila hairy, and Enhancer of split m7. DEC1 is a novel direct target for cAMP in a wide range of cells, and is involved in the control of gene expression in cAMP-activated cells. DEC2, also known as SHARP1, is highly expressed in skeletal muscle and brain. The gene encoding human DEC2 maps to chromosome 12p11.23-p12.1. DEC1 and DEC2 play a role in regulating the mammalian molecular clock by suppressing the transcription of specific clock genes. Both DEC1 and DEC2 are detected in the suprachiasmatic nucleus in a circadian fashion. Brief light impulses induce the expression of DEC1 in a phase-dependent manner.

Synonyms:

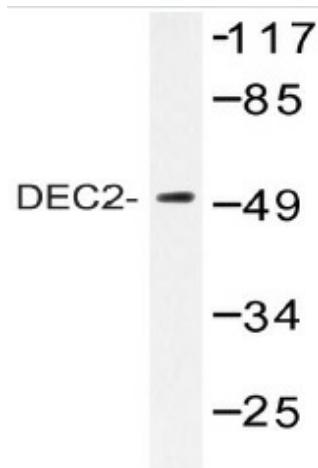
DEC2, SHARP1, SHARP-1

Protein Families:

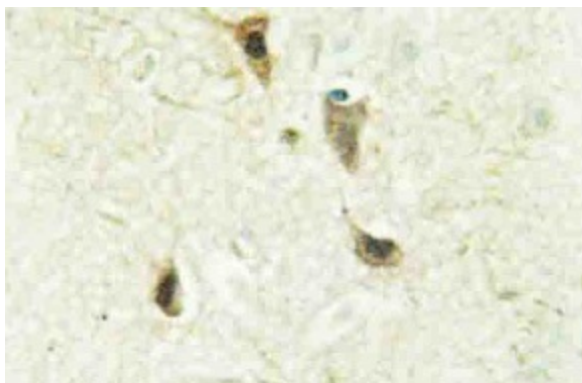
Transcription Factors

Protein Pathways:

Circadian rhythm - mammal

Product images:

Western blot analysis of DEC2 antibody (. in extracts from RAW264.7 cells.



Immunohistochemistry analysis of DEC2 antibody. in paraffin-embedded human brain tissue.