

Product datasheet for **AP20457PU-S**

Nucleophosmin (NPM1) Rabbit Polyclonal Antibody

Product data:

Product Type:	Primary Antibodies
Applications:	IHC, WB
Recommended Dilution:	Western blot: 1/500 - 1/1000. Immunohistochemistry on paraffin sections 1/50 - 1/200.
Reactivity:	Human, Mouse, Rat
Host:	Rabbit
Clonality:	Polyclonal
Specificity:	This antibody detects endogenous levels of Nucleophosmin protein. (region surrounding Glu22)
Formulation:	Phosphate buffered saline (PBS) with 15 mM sodium azide, approx. pH 7.2. State: Aff - Purified State: Liquid purified Ig fraction
Concentration:	1.0 mg/ml
Purification:	Affinity chromatography (> 95% (by SDS-PAGE)
Conjugation:	Unconjugated
Storage:	Store undiluted at 2-8°C for one month or (in aliquots) at -20°C for longer. Avoid repeated freezing and thawing.
Stability:	Shelf life: one year from despatch.
Predicted Protein Size:	~36 kDa
Gene Name:	nucleophosmin (nucleolar phosphoprotein B23, numatrin)
Database Link:	Entrez Gene 18148 Mouse Entrez Gene 25498 Rat Entrez Gene 4869 Human P06748



[View online »](#)

Background:

The transport of proteins across the nuclear envelope is a selective, multi-step process involving several cytoplasmic factors. Proteins must be recognized as import substrates, dock at the nuclear pore complex and translocate across the nuclear envelope in an ATP-dependent fashion. Several cytosolic and nuclear proteins that are central to this process have been identified. For example, two cytosolic factors critically involved in the recognition and docking process are the karyopherin alpha and karyopherin beta proteins. The karyopherin holoenzyme is a heterodimer of alpha and beta subunits. The nuclear protein B23 (also referred to as nucleophosmin) is involved in ribosomal assembly and rRNA transport. B23 is an abundant protein that is highly phosphorylated by Cdc2 kinase during mitosis.

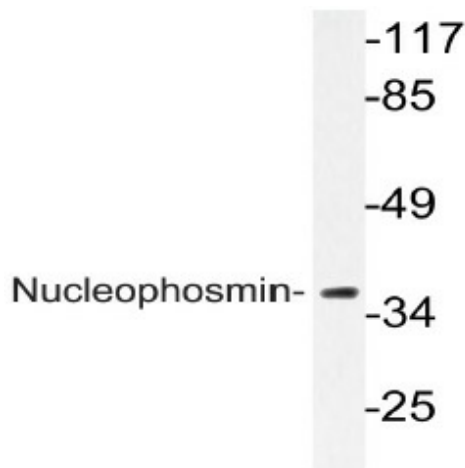
Synonyms:

NPM, NPM1, Numatrin

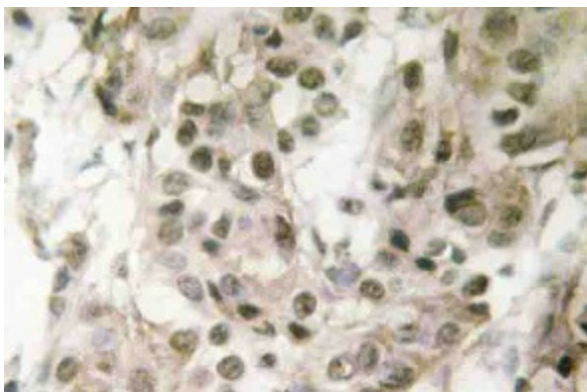
Protein Families:

Druggable Genome, Stem cell - Pluripotency, Transcription Factors

Product images:



Western blot (WB) analysis of Nucleophosmin antibody (Cat.-No.: [AP20457PU-N]) in extracts from Jurkat cells.



Immunohistochemistry (IHC) analyzes of Nucleophosmin antibody (Cat.-No.: [AP20457PU-N]) in paraffin-embedded human breast carcinoma tissue.