

## Product datasheet for **AP20453PU-M**

### MRTFA (MRTF-A) Rabbit Polyclonal Antibody

#### Product data:

Product Type:	Primary Antibodies
Applications:	IHC, WB
Recommended Dilution:	<b>Western blot:</b> 1/500 - 1/1000. <b>Immunohistochemistry on paraffin sections</b> 1/50 - 1/200.
Reactivity:	Human, Mouse, Rat
Host:	Rabbit
Clonality:	Polyclonal
Immunogen:	Synthetic peptide, corresponding to the N-terminal of Human MRTF-A.
Specificity:	This antibody detects endogenous levels of MRTF-A protein. (region surrounding His11)
Formulation:	Phosphate buffered saline (PBS), pH~7.2 State: Aff - Purified State: Liquid purified Ig fraction (> 95% pure by SDS-PAGE). Stabilizer: 50 % Glycerol Preservative: 0.02 % Sodium Azide
Concentration:	1.0 mg/ml
Purification:	Affinity Chromatography using epitope-specific immunogen.
Conjugation:	Unconjugated
Storage:	Store undiluted at 2-8°C for one month or (in aliquots) at -20°C for longer. Avoid repeated freezing and thawing.
Stability:	Shelf life: one year from despatch.
Predicted Protein Size:	~99 kDa
Gene Name:	megakaryoblastic leukemia (translocation) 1
Database Link:	<a href="#">Entrez Gene 223701 Mouse</a> <a href="#">Entrez Gene 57591 Human</a> <a href="#">Q969V6</a>



[View online »](#)

**Background:**

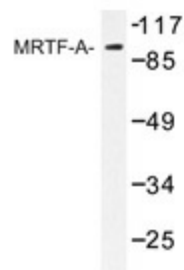
Serum response factor (SRF) is a transcription factor that binds the serum response element (SRE), a sequence that mediates the transient response of many cellular genes to growth stimulation. SRF regulates the transient response of several muscle genes in response to growth factors and recruits accessory myogenic factors to activate these muscle genes. SRF is required for the formation of vertebrate mesoderm leading to the origin of the cardiovascular system. Myocardin, in association with SRF in cardiac muscle cells, activates cardiac muscle promoters. Myocardin-related transcription factor A (MRTF-A), also known as MKL1, interacts with SRF and stimulates its transcriptional activity.

**Synonyms:**

Mkl1, Bsac, Myocardin-related transcription factor A, MKL

**Protein Families:**

Transcription Factors

**Product images:**


Western blot (WB) analysis of MRTF-A antibody (Cat.-No.: [AP20453PU-N]) in extracts from HUVEC cells.