

## Product datasheet for **AP20450PU-S**

### DUSP19 Rabbit Polyclonal Antibody

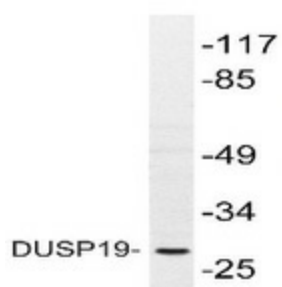
#### Product data:

Product Type:	Primary Antibodies
Applications:	IF, WB
Recommended Dilution:	<b>Immunofluorescence:</b> 1/50-1/200. <b>Western blot:</b> 1/500-1/1000.
Reactivity:	Human
Host:	Rabbit
Clonality:	Polyclonal
Specificity:	This antibody detects endogenous levels of DUSP19 protein (region surrounding Phe133).
Formulation:	Phosphate buffered saline (PBS) with 0.05% Sodium azide, approx. pH 7.2. State: Aff - Purified State: Liquid purified Ig fraction
Concentration:	1.0 mg/ml
Purification:	Affinity chromatography (> 95% pur; by SDS-PAGE)
Conjugation:	Unconjugated
Storage:	Store undiluted at 2-8°C for one month or (in aliquots) at -20°C for longer. Avoid repeated freezing and thawing.
Stability:	Shelf life: one year from despatch.
Predicted Protein Size:	~ 28 kDa
Gene Name:	dual specificity phosphatase 19
Database Link:	<a href="#">Entrez Gene 142679 Human</a> <a href="#">Q8WTR2</a>
Background:	Dual specificity phosphatase 19 (DUSP 19) is a protein phosphatase which functions as a stress-activated protein kinase pathway-regulating phosphatase.
Synonyms:	DUSP17, SKRP1, TS-DSP1, LMW-DSP3
Protein Families:	Druggable Genome, Phosphatase



[View online »](#)

## Product images:



Western blot analysis of DUSP19 in extracts from COS-7 cells using DUSP19 antibody (Cat.-No. [AP20450PU-N]).