

Product datasheet for **AP20447PU-S**

KSR2 Rabbit Polyclonal Antibody

Product data:

Product Type:	Primary Antibodies
Applications:	ELISA, IF, IHC, WB
Recommended Dilution:	Western Blot: 1/500-1/1000. Immunofluorescence: 1/50-1/200. Immunohistochemistry on Paraffin Sections: 1/50-1/200.
Reactivity:	Human, Mouse
Host:	Rabbit
Clonality:	Polyclonal
Immunogen:	Synthetic peptide, corresponding to amino acids 662-724 of Human Ksr2.
Specificity:	This antibody detects endogenous levels of Kinase suppressor of Ras 2. (region surrounding Ile694)
Formulation:	PBS, pH 7.2 State: Aff - Purified State: Liquid purified Ig fraction (> 95% by SDS-PAGE) Preservative: 0.05% Sodium Azide
Concentration:	1.0 mg/ml
Purification:	Immunoaffinity Chromatography
Conjugation:	Unconjugated
Storage:	Store undiluted at 2-8°C for one month or (in aliquots) at -20°C for longer. Avoid repeated freezing and thawing.
Stability:	Shelf life: one year from despatch.
Predicted Protein Size:	~ 108 kDa
Gene Name:	kinase suppressor of ras 2
Database Link:	Entrez Gene 283455 Human Q6VAB6



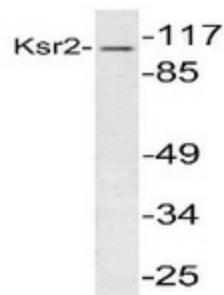
[View online »](#)

Background:

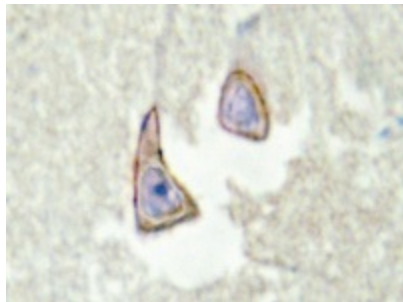
Kinase suppressor of Ras (KSR) and MAP kinase kinase kinase (MEKK3) are integral members of the MAP kinase pathway. Ksr is a conserved protein that positively regulates Ras signaling and may function as a scaffold for Raf, MEK and ERK. There are two types of Ksr proteins: Ksr-1 and Ksr-2. These two are individually necessary for a few specific Ras-dependent processes, but they are required together for most aspects of Ras-mediated signaling. Ksr-2 plays a key role in Ras-mediated signaling during germline meiotic progression and functions redundantly with Ksr-1 during the development of the excretory system pathway, hermaphrodite vulva and male spicules. Ksr-2 also functions as a negative regulator of the MEKK3-mediated activation of the MAP kinase pathways (specifically ERK and JNK) and of the NFκB pathways, and it simultaneously inhibits MEKK3-mediated IL-8 production.

Synonyms:

KSR2, KSR-2, hKSR2, hKSR-2

Product images:

Western blot analysis of KSR2 in extracts from 293 cells using Kinase suppressor of Ras 2 antibody.



Immunohistochemistry analysis of KSR2 in human brain tissue (Formalin-fixed, Paraffin-embedded) using Kinase suppressor of Ras 2 antibody.