

Product datasheet for **AP20446PU-M**

Translin (TSN) Rabbit Polyclonal Antibody

Product data:

Product Type:	Primary Antibodies
Applications:	IHC, WB
Recommended Dilution:	Western Blot: 1/500-1/1000. Immunohistochemistry on Paraffin Sections: 1/50-1/200.
Reactivity:	Human, Mouse, Rat
Host:	Rabbit
Clonality:	Polyclonal
Specificity:	This Antibody detects endogenous levels of Translin protein. (region surrounding Glu121)
Formulation:	Phosphate buffered saline (PBS), pH~7.2 State: Aff - Purified State: Liquid purified IgG fraction (> 95% pure by SDS-PAGE) Preservative: 0.05% Sodium Azide
Concentration:	1.0 mg/ml
Purification:	Affinity Chromatography using epitope-specific immunogen
Conjugation:	Unconjugated
Storage:	Store undiluted at 2-8°C for one month or (in aliquots) at -20°C for longer. Avoid repeated freezing and thawing.
Stability:	Shelf life: one year from despatch.
Predicted Protein Size:	~26 kDa
Gene Name:	translin
Database Link:	<u>Entrez Gene 22099 Mouse</u> <u>Entrez Gene 60381 Rat</u> <u>Entrez Gene 7247 Human</u> <u>Q15631</u>



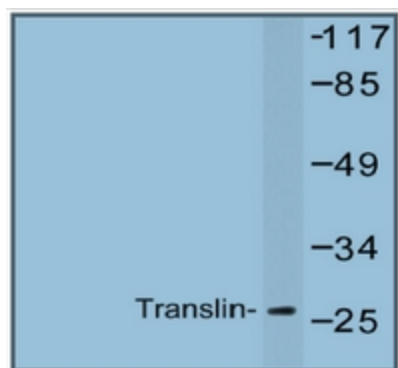
[View online »](#)

Background:

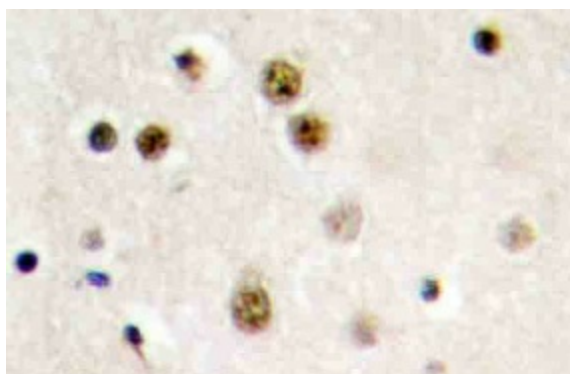
Translin, also designated testis brain RNA-binding protein (TB-RBP), is a single-stranded DNA- and RNA-binding protein that binds to the 3' UTR regions (Y and H elements) of stored mRNAs, which suppresses their in vitro translation. The human translin gene maps to chromosome 2q21.1 and encodes a 26 kDa protein that has been highly conserved throughout evolution. Translin forms a ring-shaped structure, which is responsible for DNA binding, and also contains a leucine zipper motif, which is thought to enable translin to form dimers. Translin exports specific mRNAs out of the nucleus, supported by its localization in both the nuclei and cytoplasm of neurons, and regulates their translation. Association with Trax (translin-associated factor X), inhibits the binding of translin to RNA, but enhances its binding to single stranded DNA sequences. Breakpoints in the TLS/FUS and CHOP loci contain consensus recognition motifs of translin, which associates with chromosomal translocations in liposarcomas.

Synonyms:

BCLF1; RCHF1; REHF1; TBRBP; translin; TRSLN

Product images:


Western blot analysis of Translin Antibody (Cat.-No [AP20446PU-N]) in extracts from Jurkat cells.



Immunohistochemistry analysis of Translin Antibody (Cat.-No [AP20446PU-N]) in paraffin-embedded human brain tissue.