

## Product datasheet for **AP20443PU-S**

### MELK Rabbit Polyclonal Antibody

#### Product data:

Product Type:	Primary Antibodies
Applications:	IF, IHC, WB
Recommended Dilution:	<b>Western blot:</b> 1/500-1/1000. <b>Immunofluorescence:</b> 1/50-1/200. <b>Immunohistochemistry on Paraffin Sections:</b> 1/50-1/200.
Reactivity:	Human
Host:	Rabbit
Clonality:	Polyclonal
Specificity:	This antibody detects endogenous levels of MELK protein. (region surrounding asn449)
Formulation:	PBS with 0.02% sodium azide, 50% glycerol, pH7.2 State: Aff - Purified State: Liquid purified Ig fraction (> 95% pure by SDS-PAGE)
Concentration:	1.0 mg/ml
Purification:	Affinity Chromatography using epitope-specific immunogen.
Conjugation:	Unconjugated
Storage:	Store undiluted at 2-8°C for one month or (in aliquots) at -20°C for longer. Avoid repeated freezing and thawing.
Stability:	Shelf life: one year from despatch.
Predicted Protein Size:	~75 kDa
Gene Name:	maternal embryonic leucine zipper kinase
Database Link:	<a href="#">Entrez Gene 9833 Human</a> <a href="#">Q14680</a>



[View online »](#)

**Background:**

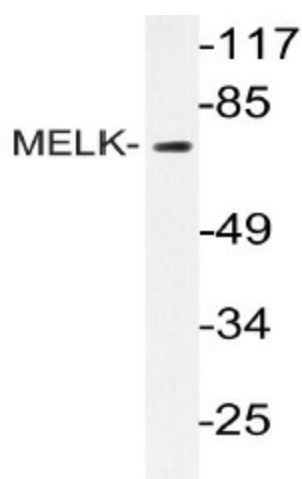
Maternal Embryonic Leucine Zipper Kinase (KIAA0175, HPK38) or MELK, a new member of the Snf1/AMPK family of kinases, encodes a protein with a kinase catalytic domain and a leucine zipper motif consisting of a periodic repetition of leucine residues at every seventh residue located within the N-terminal catalytic domain. This motif has been observed in myriad DNA-binding proteins and is presumed to be involved in protein-DNA interactions, and potentially protein-protein interactions. Research predicts that the gene product of MELK plays a role in the signal transduction events in the egg and early embryo. Mouse and human MELK proteins share 95% sequence identity in the kinase domain and northern blot analysis in mouse indicates that MELK expression is restricted to spermatogonia in the testis and to oocytes in the ovary.

**Synonyms:**

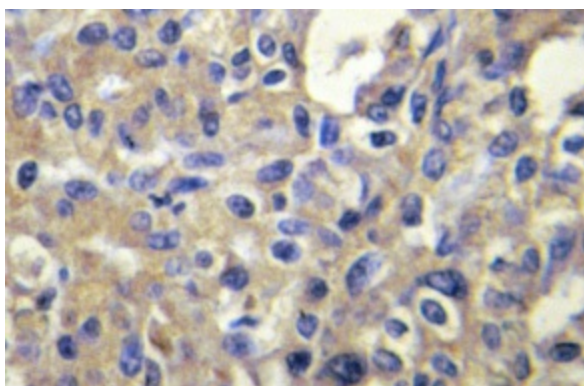
Maternal embryonic leucine zipper kinase, KIAA0175, hMELK

**Protein Families:**

Druggable Genome, Protein Kinase

**Product images:**

Western blot (WB) analysis of MELK antibody (Cat.-No.: [AP20443PU-N]) in extracts from k562 cells.



Immunohistochemistry (IHC) analyzes of MELK antibody (Cat.-No.: [AP20443PU-N]) in paraffin-embedded human liver carcinoma tissue.