

## Product datasheet for **AP20440PU-M**

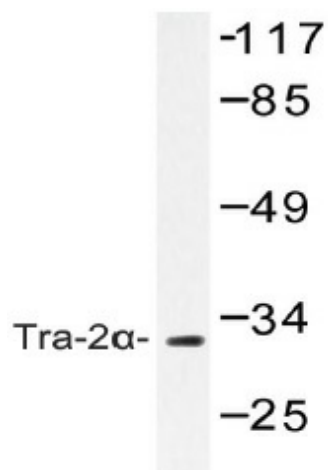
### TRA2A Rabbit Polyclonal Antibody

#### Product data:

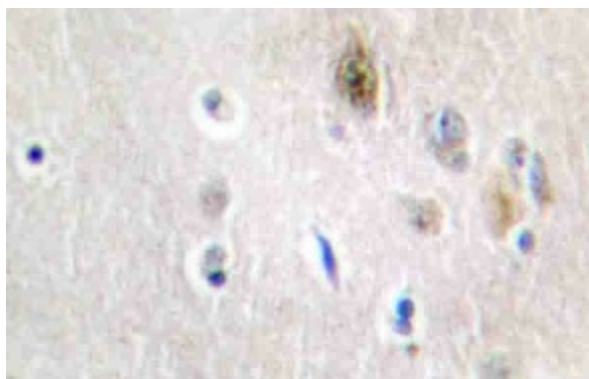
Product Type:	Primary Antibodies
Applications:	IF, IHC, WB
Recommended Dilution:	<b>Western blot:</b> 1/500-1/1000. <b>Immunofluorescence:</b> 1/50-1/200. <b>Immunohistochemistry on Paraffin Sections:</b> 1/50-1/200.
Reactivity:	Human, Mouse
Host:	Rabbit
Clonality:	Polyclonal
Specificity:	This antibody detects endogenous levels of Tra-2alpha protein. (region surrounding Gly241)
Formulation:	Phosphate buffered saline (PBS), pH~7.2 containing 0.05% Sodium Azide as preservative State: Aff - Purified State: Liquid purified Ig fraction (> 95% pure by SDS-PAGE)
Concentration:	1.0 mg/ml
Purification:	Affinity Chromatography using epitope-specific immunogen
Conjugation:	Unconjugated
Storage:	Store undiluted at 2-8°C for one month or (in aliquots) at -20°C for longer. Avoid repeated freezing and thawing.
Stability:	Shelf life: one year from despatch.
Predicted Protein Size:	~ 33 kDa
Gene Name:	transformer 2 alpha homolog
Database Link:	<a href="#">Entrez Gene 101214 Mouse</a> <a href="#">Entrez Gene 29896 Human</a> <a href="#">Q13595</a>
Background:	TRA2A (Transformer 2 alpha) is a member of the transformer 2 homolog family and encodes a protein with two RS domains and an RRM (RNA recognition motif) domain. It is a sequence specific RNA binding protein which participates in the regulation of pre-mRNA splicing.
Synonyms:	TRA2-alpha, TRA-2 alpha
Protein Pathways:	Spliceosome



[View online »](#)

**Product images:**


Western blot (WB) analysis of Tra-2alpha antibody (Cat.-No.: [AP20440PU-N]) in extracts from COS-7 cells.



Immunohistochemistry (IHC) analysis of Tra-2alpha antibody (Cat.-No.: [AP20440PU-N]) in paraffin-embedded human brain tissue.