

Product datasheet for **AP20439PU-N**

FOX E3 Rabbit Polyclonal Antibody

Product data:

Product Type:	Primary Antibodies
Applications:	IHC, WB
Recommended Dilution:	Immunohistochemistry on Paraffin sections 1/50-1/200. Western Blot 1/500-1/1000.
Reactivity:	Human, Mouse, Rat
Host:	Rabbit
Clonality:	Polyclonal
Specificity:	This antibody detects endogenous levels of FOXE3 protein. (region surrounding Arg97)
Formulation:	Phosphate buffered saline (PBS) with 0.05% Sodium azide, approx. pH 7.2. State: Aff - Purified State: Liquid purified Ig fraction
Concentration:	1.0 mg/ml
Purification:	Affinity chromatography (> 95% (by SDS-PAGE)
Conjugation:	Unconjugated
Storage:	Store the antibody undiluted at 2-8°C for one month or (in aliquots) at -20°C for longer. Avoid repeated freezing and thawing.
Stability:	Shelf life: one year from despatch.
Predicted Protein Size:	~ 33 kDa
Gene Name:	forkhead box E3
Database Link:	Entrez Gene 30923 Mouse Entrez Gene 171302 Rat Entrez Gene 2301 Human Q13461



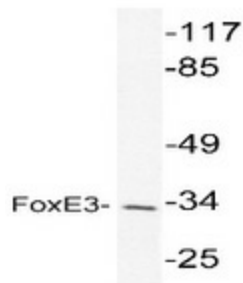
[View online »](#)

Background:

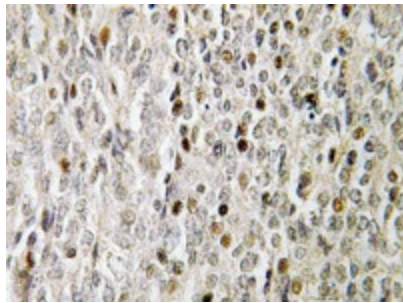
The human forkhead-box (FOX) gene family consists of at least 43 members, including FOXE3, a 288-amino acid protein. FOXE3 is a winged-helix transcription factor that plays a crucial role during the initial stages of lens development and closure of the lens vesicle. FOXE3 may also act as a factor that promotes survival and proliferation while preventing differentiation in the lens epithelium. As the posterior cells of the lens fiber begin to differentiate, expression of FOXE3 is limited to the undifferentiated cells coating the anterior surface of the lens. Congenital primary aphakia (CPA) is a rare developmental disorder caused by a null mutation in the FOXE3 gene that is identified by the absence of a lens. The development of CPA is normally stimulated during the fourth or fifth week of human embryogenesis.

Synonyms:

Forkhead box protein E3, FREAC8

Product images:

Western blot analysis of FOXE3 in extracts from K562 cell using FOXE3 / FKHL12 antibody (Cat.-No. AP20439PU-N.)



Immunohistochemistry analyses of FOXE3 in human prostate carcinoma tissue (Formalin-fixed, Paraffin-embedded) using FOXE3 / FKHL12 antibody (Cat.-No. AP20439PU-N).