

## Product datasheet for **AP20438PU-M**

### **KLF1 (+GKLF) Rabbit Polyclonal Antibody**

#### **Product data:**

Product Type:	Primary Antibodies
Applications:	IF, WB
Recommended Dilution:	<b>Western blot:</b> 1/500-1/1000. <b>Immunofluorescence:</b> 1/50-1/200.
Reactivity:	Human, Mouse, Rat
Host:	Rabbit
Clonality:	Polyclonal
Specificity:	This antibody detects endogenous levels of EKLF/GKLF protein. (region surrounding Trp318)
Formulation:	Phosphate buffered saline (PBS) with 0.05% sodium azide, approx. pH 7.2. State: Aff - Purified State: Liquid purified Ig fraction
Concentration:	1.0 mg/ml
Purification:	Affinity chromatography (> 95% (by SDS-PAGE)
Conjugation:	Unconjugated
Storage:	Store undiluted at 2-8°C for one month or (in aliquots) at -20°C for longer. Avoid repeated freezing and thawing.
Stability:	Shelf life: one year from despatch.
Predicted Protein Size:	~ 38 kDa
Gene Name:	Kruppel-like factor 1 (erythroid)
Database Link:	<a href="#">Entrez Gene 16596 Mouse</a> <a href="#">Entrez Gene 304666 Rat</a> <a href="#">Entrez Gene 10661 Human Q13351</a>
Background:	The Kruppel-type zinc finger transcription factors comprise a conserved family of DNA binding proteins that are important in developmental regulation. The Kruppel zinc finger transcription factor was initially identified in Drosophila as a segmentation gene. Kruppel-like factors that have been characterized in mammals include EKLF, LKLF and GKLF (6-8). EKLF is expressed principally in erythroid tissues, and LKLF expression is limited to the lung. GKLF is found predominantly in gut and has been shown to be expressed during growth arrest.

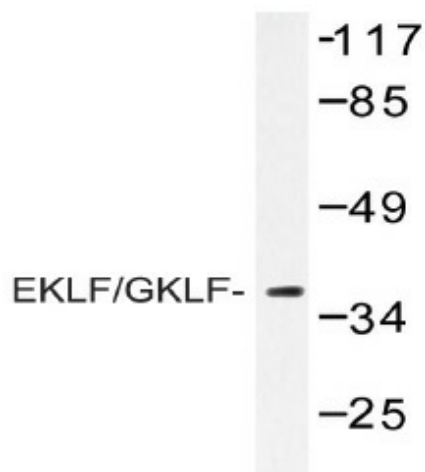


[View online »](#)

**Synonyms:** KLF1, EKLF, Krueppel-like factor 1, Erythroid transcription factor, KLF-1

**Protein Families:** Transcription Factors

**Product images:**



Western blot (WB) analysis of EKLF/GKLF antibody (Cat.-No.: [AP20438PU-N]) in extracts from Jurkat cell treated with serum 20% 15'