

Product datasheet for **AP20437PU-M**

DUSP4 Rabbit Polyclonal Antibody

Product data:

Product Type:	Primary Antibodies
Applications:	IHC, WB
Recommended Dilution:	Western blot: 1/500 - 1/1000. Immunohistochemistry on paraffin sections 1/50 - 1/200.
Reactivity:	Human, Mouse, Rat
Host:	Rabbit
Clonality:	Polyclonal
Specificity:	This antibody detects endogenous levels of MKP-2 protein. (region surrounding Tyr108)
Formulation:	Phosphate buffered saline (PBS) with 0.05% sodium azide, approx. pH 7.2. State: Aff - Purified State: Liquid purified Ig fraction
Concentration:	1.0 mg/ml
Purification:	Affinity chromatography (> 95% (by SDS-PAGE)
Conjugation:	Unconjugated
Storage:	Store undiluted at 2-8°C for one month or (in aliquots) at -20°C for longer. Avoid repeated freezing and thawing.
Stability:	Shelf life: one year from despatch.
Gene Name:	dual specificity phosphatase 4
Database Link:	<u>Entrez Gene 60587 Rat</u> <u>Entrez Gene 319520 Mouse</u> <u>Entrez Gene 1846 Human</u> <u>Q13115</u>



[View online »](#)

Background:

Mitogen-activated protein (MAP) kinases are a large class of proteins involved in signal transduction pathways that are activated by a range of stimuli and mediate a number of physiological and pathological changes in the cell. Dual specificity phosphatases (DSPs) are a subclass of the protein tyrosine phosphatase (PTP) gene superfamily, which are selective for dephosphorylating critical phosphothreonine and phosphotyrosine residues within MAP kinases. DSP gene expression is induced by a host of growth factors and/or cellular stresses, thereby negatively regulating MAP kinase superfamily members including MAPK/ERK, SAPK/JNK and p38. The members of the dual-specificity phosphatase protein family include MKP-1/CL100 (3CH134), VHR, PAC1, MKP-2, hVH-3 (B23), hVH-5, MKP-3, MKP-X, and MKP-4. Human MKP-2 maps to chromosome 8p12-p11 and encodes a 394 amino acid, 43 kDa protein that specifically inactivates ERK1, ERK2 and JNK.

Synonyms:

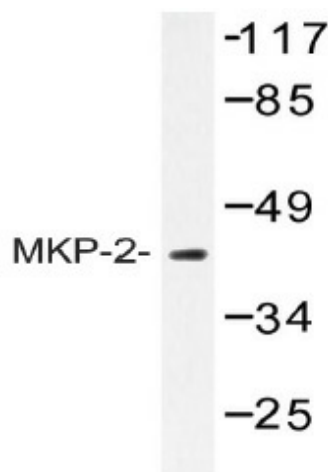
MKP2, VH2, Dual specificity protein phosphatase 4

Protein Families:

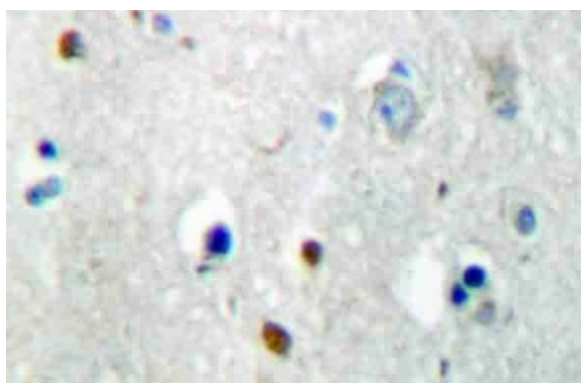
Phosphatase

Protein Pathways:

MAPK signaling pathway

Product images:


Western blot (WB) analysis of MKP-2 antibody (Cat.-No.: [AP20437PU-N]) in extracts from RAW264.7



Immunohistochemistry (IHC) analysis of MKP-2 antibody (Cat.-No.: [AP20437PU-N]) in paraffin-embedded human brain tissue.