

Product datasheet for **AP20436PU-M**

FOX L1 Rabbit Polyclonal Antibody

Product data:

Product Type:	Primary Antibodies
Applications:	IHC, WB
Recommended Dilution:	Western blot: 1/500-1/1000. Immunohistochemistry on paraffin sections: 1/50-1/200.
Reactivity:	Human
Host:	Rabbit
Clonality:	Polyclonal
Specificity:	This antibody detects endogenous levels of FoxL1 protein. (region surrounding Gly150)
Formulation:	Phosphate buffered saline (PBS), pH 7.2 State: Aff - Purified State: Liquid purified Ig fraction Preservative: 0.05% sodium azide
Concentration:	1.0 mg/ml
Purification:	Affinity-chromatography using epitope-specific immunogen; purity is > 95% (by SDS-PAGE)
Conjugation:	Unconjugated
Storage:	Store undiluted at 2-8°C for one month or (in aliquots) at -20°C for longer. Avoid repeated freezing and thawing.
Stability:	Shelf life: one year from despatch.
Predicted Protein Size:	~ 36 kDa
Gene Name:	forkhead box L1
Database Link:	Entrez Gene 2300 Human Q12952



[View online »](#)

Background:

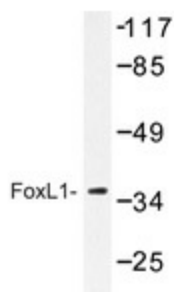
FOXL1 is a 337 amino acid protein encoded by the mouse gene *Foxl1*. FOXL1 belongs to the fork head family and contains one fork head DNA-binding domain. The HNF3/fork head family includes a large number of transcription factors that share a structurally related DNA binding domain. Fork head factors are known to play important roles both during development and in adults. FOXL1 is a winged helix transcriptional regulator expressed in the mesenchymal layer of developing and mature gastrointestinal tract. FOXL1-deficient mice exhibit various defects not only in the epithelial layer of the gastrointestinal tract but also in gut-associated lymphoid tissues. In the small intestine of FOXL1-deficient mice, the formation of Peyer's patches is affected, particularly in the caudal region. FOXL1 is a mesenchymal modifier of the adenomatous polyposis coli (APC) gene products and plays a key role in gastrointestinal tumorigenesis.

Synonyms:

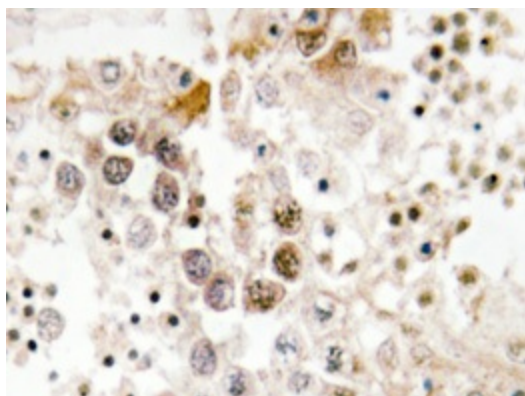
Forkhead box protein L1, FREAC7

Protein Families:

Transcription Factors

Product images:


Western blot analysis of FoxL1 antibody (Cat.-No.: [AP20436PU-N]) in extracts from COS-7.



Immunohistochemistry analyzes of FoxL1 antibody (Cat.-No.: [AP20436PU-N]) in paraffin-embedded human testis tissue.