

Product datasheet for **AP20434PU-N**

ELAVL2 Rabbit Polyclonal Antibody

Product data:

Product Type:	Primary Antibodies
Applications:	WB
Recommended Dilution:	Western blot: 1/500-1/1000.
Reactivity:	Human, Mouse, Rat
Host:	Rabbit
Clonality:	Polyclonal
Specificity:	This antibody detects endogenous levels of Hel-N1 protein. (region surrounding Ser27)
Formulation:	Phosphate buffered saline (PBS), pH 7.2 State: Aff - Purified State: Liquid purified Ig fraction Preservative: 0.05% sodium azide
Concentration:	1.0 mg/ml
Purification:	Affinity-chromatography using epitope-specific immunogen; purity is > 95% (by SDS-PAGE)
Conjugation:	Unconjugated
Storage:	Store undiluted at 2-8°C for one month or (in aliquots) at -20°C for longer. Avoid repeated freezing and thawing.
Stability:	Shelf life: one year from despatch.
Predicted Protein Size:	~ 38 kDa
Gene Name:	ELAV like neuron-specific RNA binding protein 2
Database Link:	Entrez Gene 15569 Mouse Entrez Gene 286973 Rat Entrez Gene 1993 Human Q12926



[View online »](#)

Background:

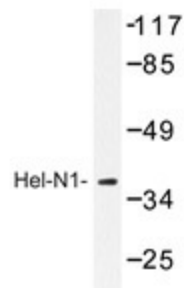
The Elav-like genes encode for a family of RNA-binding proteins. Elav, a Drosophila protein and the first described member, is expressed immediately after neuroblastic differentiation into neurons and is necessary for neuronal differentiation and maintenance. Several mammalian Elav-like proteins, designated HuC, HuD and Hel-N1, are also expressed in postmitotic neurons. An additional mammalian homolog, HuR, which is also designated HuA, is ubiquitously expressed and is also overexpressed in a wide variety of tumors. Characteristically, these homologs all contain three RNA recognition motifs (RRM), and they specifically bind to AU-rich elements (ARE) in the 3'-untranslated region of mRNAs transcripts. ARE sites target mRNA for rapid degradation and thereby regulate the expression levels of genes involved in cell growth and differentiation.

Synonyms:

ELAV-like protein 2, Hu-antigen B, Hel-N1

Protein Families:

Transcription Factors

Product images:

Western blot analysis of Hel-N1 antibody (Cat.-No.: AP20434PU-N) in extracts from HepG2 cell.