

Product datasheet for **AP20430PU-M**

PFKL Rabbit Polyclonal Antibody

Product data:

Product Type:	Primary Antibodies
Applications:	IF, IHC, WB
Recommended Dilution:	Western blot: 1/500-1/1000. Immunohistochemistry on paraffin sections: 1/500-1/1000. Immunofluorescence: 1/50-1/200.
Reactivity:	Human, Mouse, Rat
Host:	Rabbit
Clonality:	Polyclonal
Specificity:	This antibody detects endogenous levels of PFK-C protein. (region surrounding Gln365)
Formulation:	Phosphate buffered saline (PBS), pH 7.2 State: Aff - Purified State: Liquid purified Ig fraction Preservative: 0.05% sodium azide
Concentration:	1.0 mg/ml
Purification:	Affinity-chromatography using epitope-specific immunogen; purity is > 95% (by SDS-PAGE)
Conjugation:	Unconjugated
Storage:	Store undiluted at 2-8°C for one month or (in aliquots) at -20°C for longer. Avoid repeated freezing and thawing.
Stability:	Shelf life: one year from despatch.
Predicted Protein Size:	~ 85 kDa
Gene Name:	phosphofructokinase, liver type
Database Link:	<u>Entrez Gene 18641 Mouse</u> <u>Entrez Gene 25741 Rat</u> <u>Entrez Gene 5211 Human</u> <u>P17858</u>



[View online »](#)

Background:

The PFKP gene encodes the platelet isoform of phosphofructokinase (PFK). PFK catalyzes the irreversible conversion of fructose-6-phosphate to fructose-1,6-bisphosphate and is a key regulatory enzyme in glycolysis. The PFKP gene, which maps to chromosome 10p, is also expressed in fibroblasts. See also the muscle and liver isoforms of phosphofructokinase, which map to chromosomes 12q13 and 21q22, respectively. Vora determined that full tetrameric phosphofructokinase enzyme expressed in platelets can be composed of subunits P4, P3L, and P2L2.

Synonyms:

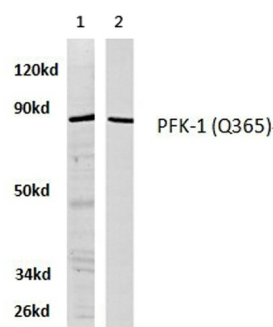
Phosphofructokinase 1, 6-phosphofructokinase liver, PFK-B, Phosphohexokinase

Protein Families:

Druggable Genome

Protein Pathways:

Fructose and mannose metabolism, Galactose metabolism, Glycolysis / Gluconeogenesis, Metabolic pathways, Pentose phosphate pathway

Product images:


Lane 1: A549 whole cell lysate
Lane 2: Raw264.7 whole cell lysate
PFK-1 (Q365) pAb at 1:500 dilution

Western blot (WB) analysis of PFK-1 antibody (Cat.-No.: [AP20430PU-N]) in extracts from A549 and raw264.7 cell.