

Product datasheet for **AP20429PU-N**

IRX1 Rabbit Polyclonal Antibody

Product data:

Product Type:	Primary Antibodies
Applications:	IF, IHC, WB
Recommended Dilution:	Western blot: 1/500-1/1000. Immunohistochemistry on paraffin sections: 1/50-1/200. Immunofluorescence: 1/50-1/200.
Reactivity:	Human, Mouse
Host:	Rabbit
Clonality:	Polyclonal
Specificity:	This antibody detects endogenous levels of IRX1 protein. (region surrounding Asp231)
Formulation:	Phosphate buffered saline (PBS), pH 7.2 State: Aff - Purified State: Liquid purified Ig fraction Preservative: 0.05% sodium azide
Concentration:	1.0 mg/ml
Purification:	Affinity-chromatography using epitope-specific immunogen; purity is > 95% (by SDS-PAGE)
Conjugation:	Unconjugated
Storage:	Store undiluted at 2-8°C for one month or (in aliquots) at -20°C for longer. Avoid repeated freezing and thawing.
Stability:	Shelf life: one year from despatch.
Predicted Protein Size:	~ 47 kDa
Gene Name:	iroquois homeobox 1
Database Link:	Entrez Gene 16371 Mouse Entrez Gene 79192 Human P78414



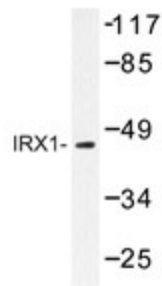
[View online »](#)

Background:

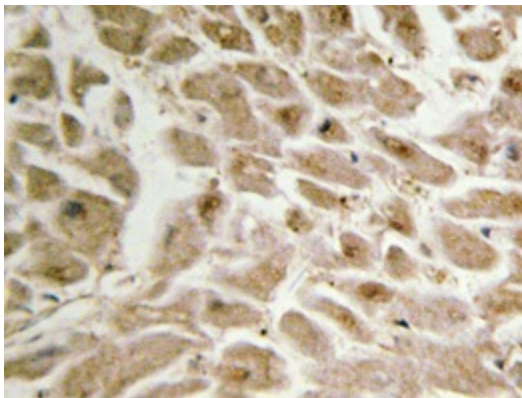
The Iroquois homeobox gene family of transcription factors regulate aspects of embryonic development including anterior/posterior and dorsal/ventral axis patterning in the central nervous system. The Iroquois family are clustered on two loci, IRXA and IRXB, which map to chromosomes 8 and 13 in mice. The IRXA group includes *Irx1*, *Irx2* and *Irx4*; the IRXB group is comprises *Irx3*, *Irx5* and *Irx6*. *Irx1* and *Irx2* are both widely expressed during development in the lung epithelium and also in the ventricular septum. *Irx1* and *Irx2* also play a role in digit formation (E11.5–E14.5). The *Irx* gene family members are each expressed in a distinct pattern during mouse heart development. Specifically, *Irx1* and *Irx2* are expressed in the ventricular septum and *Irx3* is expressed in the ventricular trabeculated myocardium. In addition, *Irx4* is expressed in the linear heart tube and the AV canal; *Irx5* is expressed in the endocardium lining the ventricular and atrial myocardium. Furthermore, the *IRX4* gene may modulate cardiac development and function. Although the heart of *Irx4*⁻ mice appears to develop normally, adult *Irx4*⁻ mice exhibit cardiomyopathy, including cardiac hypertrophy and decreased contractility.

Synonyms:

Iroquois homeobox protein 1, IRX-1

Product images:


Western blot analysis of IRX1 antibody (Cat.-No.: AP20429PU-N) in extracts from LOVO cells.



Immunohistochemistry analyzes of IRX1 antibody (Cat.-No.: AP20429PU-N) in paraffin-embedded human heart tissue.