

## Product datasheet for **AP20428PU-M**

### **CKS1 (CKS1B) Rabbit Polyclonal Antibody**

#### **Product data:**

Product Type:	Primary Antibodies
Applications:	IF, WB
Recommended Dilution:	<b>Western blot:</b> 1/500-1/1000. <b>Immunofluorescence:</b> 1/50-1/200.
Reactivity:	Human, Mouse
Host:	Rabbit
Clonality:	Polyclonal
Specificity:	This antibody detects endogenous levels of Cks1 protein. (region surrounding His3)
Formulation:	Phosphate buffered saline (PBS), pH~7.2 State: Aff - Purified State: Liquid purified Ig fraction (> 95% pure by SDS-PAGE). Preservative: 0.05% Sodium Azide
Concentration:	1.0 mg/ml
Purification:	Affinity Chromatography using epitope-specific immunogen.
Conjugation:	Unconjugated
Storage:	Store undiluted at 2-8°C for one month or (in aliquots) at -20°C for longer. Avoid repeated freezing and thawing.
Stability:	Shelf life: one year from despatch.
Predicted Protein Size:	~9 kDa
Gene Name:	CDC28 protein kinase regulatory subunit 1B
Database Link:	<u><a href="#">Entrez Gene 54124 Mouse</a></u> <u><a href="#">Entrez Gene 1163 Human</a></u> <u><a href="#">P61024</a></u>



[View online »](#)

**Background:**

The Cdc2 p34-cyclin B complex plays a critical role in the cell cycle by regulating the G2 to M transition. Also referred to as M-phase promoting factor or MPF, this complex is a required component of the cell cycle machinery and is necessary for cell entry into mitosis. The Cdc28 protein represents the *S. cerevisiae* counterpart of human Cdc2 p34 and has been found complexed to a regulatory protein, termed p13suc 1, in addition to cyclin B. The human homolog of p13suc 1 has been identified and designated Cks1 p9. Null mutations in the p13suc 1 and Cks1 p9 genes result in the arrest of the cell cycle at either the G1 or G2 phase, suggesting that the proteins may also regulate the activity of cyclin dependent kinases that act at critical points early in the cell cycle.

**Synonyms:**

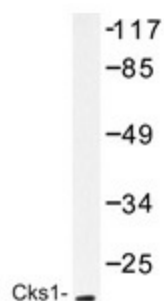
CKS-1, CKS1, PNAS-16, PNAS-143

**Protein Families:**

Druggable Genome, Stem cell - Pluripotency

**Protein Pathways:**

Pathways in cancer, Small cell lung cancer

**Product images:**


Western blot analysis of Cks1 antibody (Cat.-No.: [AP20428PU-N]) in extracts from Jurkat cells treated with serum 20% 15'.