

## Product datasheet for **AP20425PU-N**

### CTBP2 Rabbit Polyclonal Antibody

#### Product data:

Product Type:	Primary Antibodies
Applications:	IF, IHC, WB
Recommended Dilution:	<b>Western blot:</b> 1/500-1/1000. <b>Immunohistochemistry on paraffin sections:</b> 1/50-1/200. <b>Immunofluorescence:</b> 1/50-1/200.
Reactivity:	Human, Mouse, Rat
Host:	Rabbit
Clonality:	Polyclonal
Specificity:	This detects endogenous levels of CtBP2 protein. (region surrounding Pro432)
Formulation:	Phosphate buffered saline (PBS), pH 7.2 State: Aff - Purified State: Liquid purified Ig fraction Preservative: 15 mM sodium azide
Concentration:	1.0 mg/ml
Purification:	Affinity-chromatography using epitope-specific immunogen; purity is > 95% (by SDS-PAGE)
Conjugation:	Unconjugated
Storage:	Store undiluted at 2-8°C for one month or (in aliquots) at -20°C for longer. Avoid repeated freezing and thawing.
Stability:	Shelf life: one year from despatch.
Predicted Protein Size:	~ 48 kDa
Gene Name:	C-terminal binding protein 2
Database Link:	<a href="#">Entrez Gene 13017 Mouse</a> <a href="#">Entrez Gene 81717 Rat</a> <a href="#">Entrez Gene 1488 Human P56545</a>



[View online »](#)

**Background:**

CtBP1 is a 48 kDa cellular phosphoprotein that associates with various proteins and functions as a corepressor of transcription. CtBP1 and the related protein CtBP2 are characterized as C-terminal binding proteins of adenovirus E1A, and they preferentially associate with the E1A via a 5 amino acid motif, PLDLS, to repress E1A induced oncogenesis and cellular transformation. CtBP1 is expressed from embryo to adult, but CtBP2 is mainly expressed during embryogenesis. During skeletal and T cell development, CtBP1 and CtBP2 associate with the PLDLSL domain of deltaEF1, a cellular zinc finger-homeodomain protein, and thereby enhances deltaEF1-induced transcriptional silencing. In addition, CtBP complexes with CtIP, a 125 kDa protein that recognizes distinctly different protein motifs from CtBP. CtIP binds to the BRCT repeats within the breast cancer gene BRCA1 and enables CtBP to influence BRCA1 activity. CtIP/CtBP binding to BRCA1 inhibits the transactivation of the p21 promoter, and it is critical for regulating p21 transcription in response to DNA damage.

**Synonyms:**

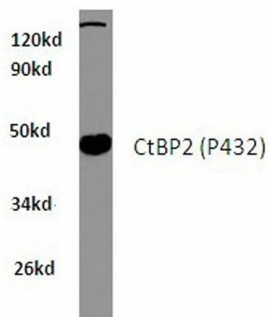
C-terminal-binding protein 2

**Protein Families:**

Stem cell - Pluripotency, Stem cell relevant signaling - Wnt Signaling pathway

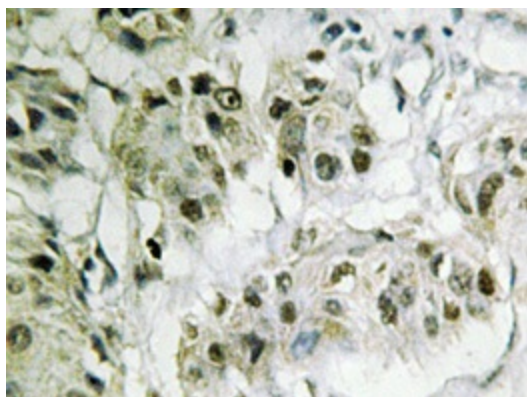
**Protein Pathways:**

Chronic myeloid leukemia, Notch signaling pathway, Pathways in cancer, Wnt signaling pathway

**Product images:**

Western blot (WB) analysis of CtBP2 antibody (Cat.-No.: AP20425PU-N) in extracts from A549 cells.

A549 whole cell lysate  
CtBP2 (P432) pAb at 1::500 dilution



Immunohistochemistry analyzes of CtBP2 antibody (Cat.-No.: AP20425PU-N) in paraffin-embedded human breast carcinoma tissue.