

Product datasheet for **AP20423PU-M**

LIM kinase 2 (LIMK2) Rabbit Polyclonal Antibody

Product data:

Product Type:	Primary Antibodies
Applications:	IF, IHC, WB
Recommended Dilution:	Western blot: 1/500-1/1000. Immunofluorescence: 1/50-1/200. Immunohistochemistry on Paraffin Sections: 1/50-1/200.
Reactivity:	Human, Mouse, Rat
Host:	Rabbit
Clonality:	Polyclonal
Specificity:	This antibody detects endogenous levels of LIMK2 protein. (region surrounding Lys491)
Formulation:	Phosphate buffered saline (PBS), pH~7.2 containing 0.05% Sodium Azide as preservative. State: Aff - Purified State: Liquid purified Ig fraction (> 95% pure by SDS-PAGE).
Concentration:	1.0 mg/ml
Purification:	Affinity-Chromatography using epitope-specific immunogen.
Conjugation:	Unconjugated
Storage:	Store undiluted at 2-8°C for one month or (in aliquots) at -20°C for longer. Avoid repeated freezing and thawing.
Stability:	Shelf life: one year from despatch.
Predicted Protein Size:	~ 72 kDa
Gene Name:	LIM domain kinase 2
Database Link:	<u>Entrez Gene 16886 Mouse</u> <u>Entrez Gene 29524 Rat</u> <u>Entrez Gene 3985 Human</u> <u>P53671</u>



[View online »](#)

Background:

Proteins containing LIM motifs are typically involved in cell fate determination and growth control. A family of proteins designated LIM kinases, including LIMK-1 and LIMK-2, has been identified. LIMK-1 has been shown to regulate the stabilization of F-Actin structures and Cofilin activity, indicating that LIMK-1 plays a role in a signaling pathway involved in the regulation of cell motility and morpho-genesis. LIMK-1 inhibits neuronal differentiation of PC12 cells, and it is thought to act by interfering with events downstream of MAPK activation. Expression patterns of LIMK-1 and LIMK-2 suggest that these proteins may have different functions during development. A truncated form of LIMK-2 has been identified in adult testis that is thought to arise from an alternative initiation exon.

Synonyms:

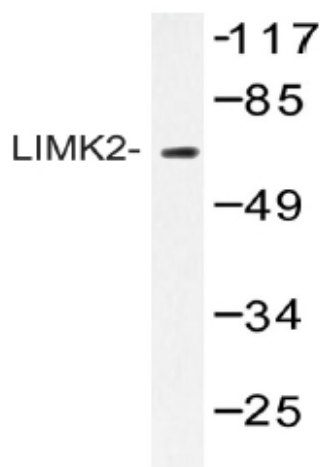
LIMK2, LIM domain kinase 2, LIMK-2, EC=2.7.11.1

Protein Families:

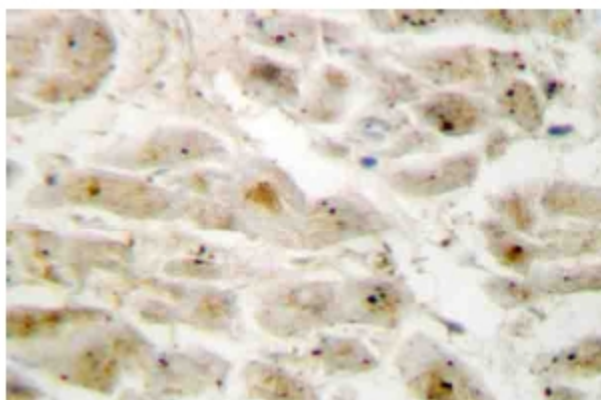
Druggable Genome, Protein Kinase

Protein Pathways:

Axon guidance, Fc gamma R-mediated phagocytosis, Regulation of actin cytoskeleton

Product images:


Western blot (WB) analysis of [AP20423PU-N] LIMK2 antibody in extracts from HepG2 cells.



Immunohistochemistry: [AP20423PU-N] LIMK2 antibody staining of Paraffin-Embedded Human brain tissue.