

Product datasheet for **AP20419PU-S**

TPTEP2-CSNK1E Rabbit Polyclonal Antibody

Product data:

| | |
|-------------------------|---|
| Product Type: | Primary Antibodies |
| Applications: | IF, IHC, WB |
| Recommended Dilution: | Western blot: 1/500-1/1000. Immunohistochemistry on paraffin sections: 1/50-1/200. Immunofluorescence: 1/50-1/200. |
| Reactivity: | Human, Mouse |
| Host: | Rabbit |
| Clonality: | Polyclonal |
| Immunogen: | Synthetic peptide, corresponding to amino acids 250-350 of Human Casein Kinase I ϵ . |
| Specificity: | This antibody detects endogenous levels of Casein Kinase I ϵ protein. (region surrounding Pro301) |
| Formulation: | Phosphate buffered saline (PBS), pH 7.2 State: Aff - Purified State: Liquid purified Ig fraction Preservative: 0.05% sodium azide |
| Concentration: | 1.0 mg/ml |
| Purification: | Affinity-chromatography using epitope-specific immunogen; purity is > 95% (by SDS-PAGE) |
| Conjugation: | Unconjugated |
| Storage: | Store undiluted at 2-8°C for one month or (in aliquots) at -20°C for longer. Avoid repeated freezing and thawing. |
| Stability: | Shelf life: one year from despatch. |
| Predicted Protein Size: | ~ 47 kDa |
| Gene Name: | TPTEP2-CSNK1E readthrough |
| Database Link: | Entrez Gene 27373 Mouse Entrez Gene 102800317 Human P49674 |



[View online »](#)

Background:

Casein kinase I (also designated CKI) and casein kinase II (also designated CKII) compose a family of serine/ threonine protein kinases which are present in all eukaryotes examined to date. CKI family members, which include CKI α , γ , ϵ and δ , have been implicated in the control of cytoplasmic and nuclear processes, including DNA replication and repair. CKII is usually expressed as a tetrameric complex consisting of either an $\alpha 2\beta 2$ or an $\alpha\alpha'\beta 2$ structure. The α catalytic subunit is stimulated by the β regulatory subunit, which undergoes autophosphorylation. CKII activity is high in the cytosol and nucleus of proliferating and differentiating cells. CKII is known to phosphorylate more than 100 different substrates including nuclear oncoproteins, transcription factors and enzymes involved in DNA metabolism.

Synonyms:

CKI-epsilon, CKI ϵ , CSNK1E

Protein Families:

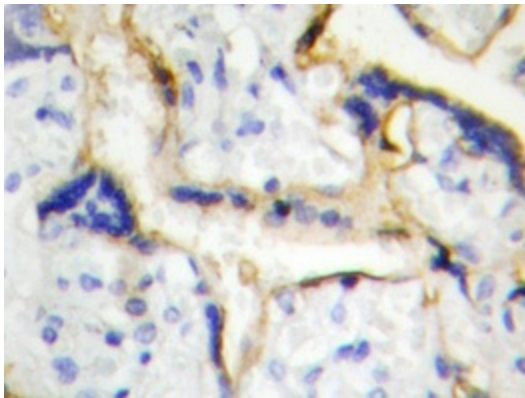
Druggable Genome, Protein Kinase

Protein Pathways:

Circadian rhythm - mammal, Hedgehog signaling pathway, Wnt signaling pathway

Product images:

Western blot analysis of Casein Kinase I ϵ antibody in extracts from LOVO cells.



Immunohistochemistry analyzes of Casein Kinase I ϵ antibody in paraffin-embedded human placenta tissue.