

## Product datasheet for **AP20419PU-M**

### TPTEP2-CSNK1E Rabbit Polyclonal Antibody

#### Product data:

Product Type:	Primary Antibodies
Applications:	IF, IHC, WB
Recommended Dilution:	<b>Western blot:</b> 1/500-1/1000. <b>Immunohistochemistry on paraffin sections:</b> 1/50-1/200. <b>Immunofluorescence:</b> 1/50-1/200.
Reactivity:	Human, Mouse
Host:	Rabbit
Clonality:	Polyclonal
Immunogen:	Synthetic peptide, corresponding to amino acids 250-350 of Human Casein Kinase Iε.
Specificity:	This antibody detects endogenous levels of Casein Kinase Iε protein. (region surrounding Pro301)
Formulation:	Phosphate buffered saline (PBS), pH 7.2 State: Aff - Purified State: Liquid purified Ig fraction Preservative: 0.05% sodium azide
Concentration:	1.0 mg/ml
Purification:	Affinity-chromatography using epitope-specific immunogen; purity is > 95% (by SDS-PAGE)
Conjugation:	Unconjugated
Storage:	Store undiluted at 2-8°C for one month or (in aliquots) at -20°C for longer. Avoid repeated freezing and thawing.
Stability:	Shelf life: one year from despatch.
Predicted Protein Size:	~ 47 kDa
Gene Name:	TPTEP2-CSNK1E readthrough
Database Link:	<a href="#">Entrez Gene 27373 Mouse</a> <a href="#">Entrez Gene 102800317 Human</a> <a href="#">P49674</a>



[View online »](#)

**Background:**

Casein kinase I (also designated CKI) and casein kinase II (also designated CKII) compose a family of serine/ threonine protein kinases which are present in all eukaryotes examined to date. CKI family members, which include CKI $\alpha$ ,  $\gamma$ ,  $\epsilon$  and  $\delta$ , have been implicated in the control of cytoplasmic and nuclear processes, including DNA replication and repair. CKII is usually expressed as a tetrameric complex consisting of either an  $\alpha 2\beta 2$  or an  $\alpha\alpha'\beta 2$  structure. The  $\alpha$  catalytic subunit is stimulated by the  $\beta$  regulatory subunit, which undergoes autophosphorylation. CKII activity is high in the cytosol and nucleus of proliferating and differentiating cells. CKII is known to phosphorylate more than 100 different substrates including nuclear oncoproteins, transcription factors and enzymes involved in DNA metabolism.

**Synonyms:**

CKI-epsilon, CKI $\epsilon$ , CSNK1E

**Protein Families:**

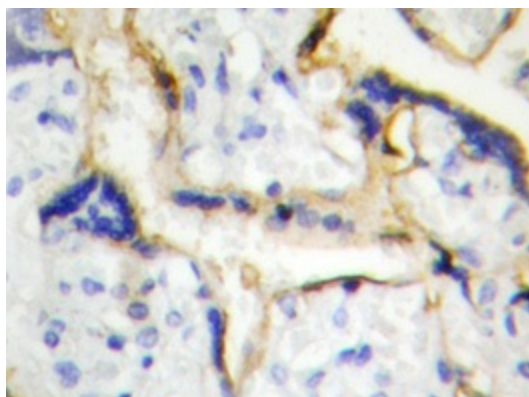
Druggable Genome, Protein Kinase

**Protein Pathways:**

Circadian rhythm - mammal, Hedgehog signaling pathway, Wnt signaling pathway

**Product images:**


Western blot analysis of Casein Kinase I $\epsilon$  antibody in extracts from LOVO cells.



Immunohistochemistry analyzes of Casein Kinase I $\epsilon$  antibody in paraffin-embedded human placenta tissue.