

Product datasheet for **AP20417PU-M**

CSK Rabbit Polyclonal Antibody

Product data:

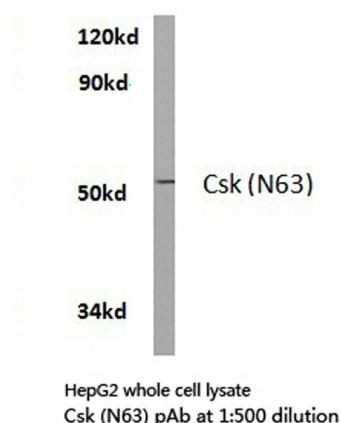
Product Type:	Primary Antibodies
Applications:	IHC, WB
Recommended Dilution:	Western blot: 1/500-1/1000. Immunofluorescence: 1/50-1/200.
Reactivity:	Human, Mouse, Rat
Host:	Rabbit
Clonality:	Polyclonal
Specificity:	This antibody detects endogenous levels of Csk protein. (region surrounding asn63)
Formulation:	Phosphate buffered saline (PBS), pH 7.2 State: Aff - Purified State: Liquid purified Ig fraction Preservative: 15 mM sodium azide
Concentration:	1.0 mg/ml
Purification:	Affinity-purified from rabbit antiserum by affinity-chromatography using epitope-specific immunogen; purity is > 95% (by SDS-PAGE)
Conjugation:	Unconjugated
Storage:	Store undiluted at 2-8°C for one month or (in aliquots) at -20°C for longer. Avoid repeated freezing and thawing.
Stability:	Shelf life: one year from despatch.
Predicted Protein Size:	~ 50 kDa
Gene Name:	c-src tyrosine kinase
Database Link:	<u>Entrez Gene 12988 Mouse</u> <u>Entrez Gene 315707 Rat</u> <u>Entrez Gene 1445 Human</u> <u>P41240</u>



[View online »](#)

Background:	C terminal Src kinase (CSK) is a non receptor protein tyrosine kinase. One of its major functions is to specifically phosphorylate a conserved C terminal tyrosine of Src family kinases thereby down regulating their kinase activity. CSK is expressed ubiquitously as a protein of approximately 50 KDa in cytosol, but a fraction distributes to lipid rafts due to interaction with the lipid raft associated protein PAG (CSK binding protein).
Synonyms:	Tyrosine-protein kinase CSK, C-SRC kinase, Protein-tyrosine kinase CYL
Protein Families:	Druggable Genome, Protein Kinase
Protein Pathways:	Chemokine signaling pathway, Epithelial cell signaling in Helicobacter pylori infection, Neurotrophin signaling pathway, Regulation of actin cytoskeleton

Product images:



Western blot (WB) analysis of Csk antibody (Cat.- No.: [AP20417PU-N]) in extracts from HepG2 cells.