

Product datasheet for **AP20415PU-M**

LTBR Rabbit Polyclonal Antibody

Product data:

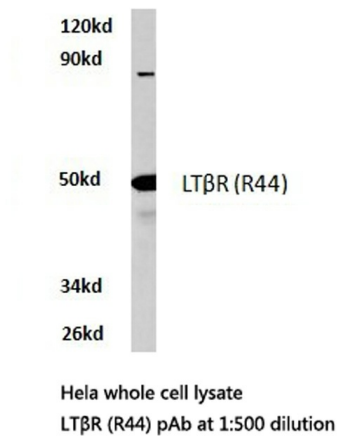
Product Type:	Primary Antibodies
Applications:	IF, WB
Recommended Dilution:	Western blot: 1/500-1/1000. Immunofluorescence: 1/50-1/200.
Reactivity:	Human, Mouse
Host:	Rabbit
Clonality:	Polyclonal
Specificity:	This antibody detects endogenous levels of LTβR protein. (region surrounding Arg44)
Formulation:	Phosphate buffered saline (PBS), pH 7.2 State: Aff - Purified State: Liquid purified Ig fraction Preservative: 15 mM sodium azide
Concentration:	1.0 mg/ml
Purification:	Affinity-chromatography using epitope-specific immunogen; purity is > 95% (by SDS-PAGE)
Conjugation:	Unconjugated
Storage:	Store undiluted at 2-8°C for one month or (in aliquots) at -20°C for longer. Avoid repeated freezing and thawing.
Stability:	Shelf life: one year from despatch.
Predicted Protein Size:	~ 50 kDa
Gene Name:	lymphotoxin beta receptor
Database Link:	<u>Entrez Gene 17000 Mouse</u> <u>Entrez Gene 4055 Human</u> <u>P36941</u>



[View online »](#)

Background:	The protein encoded by this gene is a member of the tumor necrosis factor (TNF) family of receptors. It is expressed on the surface of most cell types, including cells of epithelial and myeloid lineages, but not on T and B lymphocytes. The protein specifically binds the lymphotoxin membrane form (a complex of lymphotoxin alpha and lymphotoxin beta). The encoded protein and its ligand play a role in the development and organization of lymphoid tissue and tranformed cells. Activation of the encoded protein can trigger apoptosis.
Synonyms:	Tumor necrosis factor receptor 3, TNF-R3, Tumor necrosis factor C receptor, TNFCR, TNFRSF3, D12S370, Lymphotoxin-beta receptor
Protein Families:	Druggable Genome, Transmembrane
Protein Pathways:	Cytokine-cytokine receptor interaction

Product images:



Western blot (WB) analysis of LTβR antibody (Cat.-No.: [AP20415PU-N]) in extracts from HeLa cells.