

Product datasheet for **AP20414PU-M**

ROR alpha (RORA) Rabbit Polyclonal Antibody

Product data:

Product Type:	Primary Antibodies
Applications:	IF, IHC, WB
Recommended Dilution:	Western blot: 1/500-1/1000. Immunohistochemistry on paraffin sections: 1/50-1/200. Immunofluorescence: 1/50-1/200.
Reactivity:	Human
Host:	Rabbit
Clonality:	Polyclonal
Specificity:	This antibody detects endogenous levels of RORα protein. (region surrounding Gly41)
Formulation:	Phosphate buffered saline (PBS), pH 7.2 State: Aff - Purified State: Liquid purified Ig fraction Preservative: 0.05% sodium azide
Concentration:	1.0 mg/ml
Purification:	Affinity-chromatography using epitope-specific immunogen; purity is > 95% (by SDS-PAGE)
Conjugation:	Unconjugated
Storage:	Store undiluted at 2-8°C for one month or (in aliquots) at -20°C for longer. Avoid repeated freezing and thawing.
Stability:	Shelf life: one year from despatch.
Predicted Protein Size:	~ 60 kDa
Gene Name:	RAR related orphan receptor A
Database Link:	Entrez Gene 6095 Human P35398



[View online »](#)

Background:

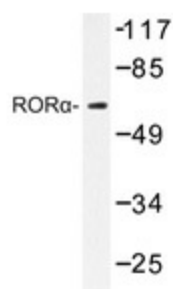
Retinoid related orphan receptor alpha (ROR alpha) is a NR1 Thyroid Hormone Like Receptor. To date, ROR alpha, a beta, a and gamma subtypes have been discovered. ROR alpha has been shown to affect the development of the central nervous system. Deletion of ROR alpha in mice causes severe impairment in the differentiation of cerebellar Purkinje neurons and results in the staggerer phenotype. ROR alpha has been suggested as a potential target in the treatment of chronic inflammatory diseases, including atherosclerosis and rheumatoid arthritis.

Synonyms:

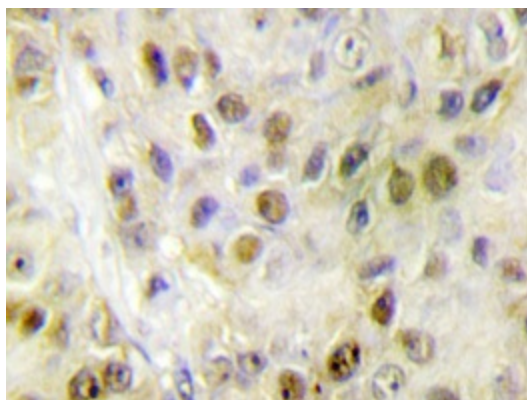
Nuclear receptor ROR-alpha, Nuclear receptor RZR-alpha, NR1F1, RZRA

Protein Families:

Druggable Genome, Nuclear Hormone Receptor, Transcription Factors

Product images:


Western blot analysis of RORα antibody (Cat.-No.: [AP20414PU-N]) in extracts from HeLa cells.



Immunohistochemistry analyzes of RORα antibody (Cat.-No.: [AP20414PU-N]) in paraffin-embedded human breast carcinoma tissue.