

## Product datasheet for **AP20399PU-S**

### TRIM38 Rabbit Polyclonal Antibody

#### Product data:

Product Type:	Primary Antibodies
Applications:	WB
Recommended Dilution:	<b>Western Blot:</b> 1/500 - 1/1000.
Reactivity:	Human, Mouse
Host:	Rabbit
Clonality:	Polyclonal
Specificity:	This antibody detects endogenous levels of RNF15 protein. (region surrounding Glu193)
Formulation:	Phosphate buffered saline (PBS) with 0.05% sodium azide, approx. pH 7.2. State: Aff - Purified State: Liquid purified Ig fraction > 95% (by SDS-PAGE)
Concentration:	1.0 mg/ml
Purification:	Affinity-chromatography using epitope-specific immunogen
Conjugation:	Unconjugated
Storage:	Store undiluted at 2-8°C for one month or (in aliquots) at -20°C for longer. Avoid repeated freezing and thawing.
Stability:	Shelf life: one year from despatch.
Predicted Protein Size:	~ 58 kDa
Gene Name:	tripartite motif containing 38
Database Link:	<a href="#">Entrez Gene 214158 Mouse</a> <a href="#">Entrez Gene 10475 Human</a> <a href="#">O00635</a>



[View online »](#)

**Background:**

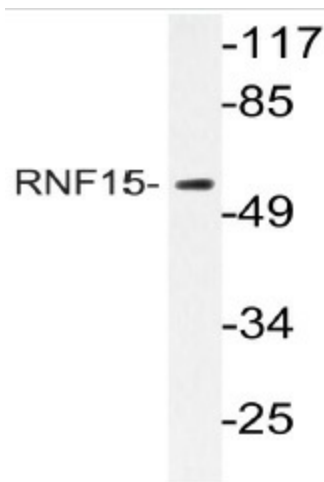
The RING-type zinc finger motif is present in a number of viral and eukaryotic proteins and is made of a conserved cysteine-rich domain that is able to bind two zinc atoms. Proteins that contain this conserved domain are generally involved in the ubiquitination pathway of protein degradation. RNF152 (RINGfinger protein 152) is a 203 amino acid protein that contains one RING-type zinc finger and may be involved in protein degradation events throughout the cell. The gene encoding RNF152 maps to human chromosome 18, which houses over 300 protein-coding genes and contains nearly 76 million bases. There are a variety of diseases associated with defects in chromosome 18- localized genes, some of which include Trisomy 18 (also known as Edwards syndrome), Niemann-Pick disease, hereditary hemorrhagic telangiectasi,a erythropoietic protoporphyria and follicular lymphomas.

**Synonyms:**

RORET, RING finger protein 15

**Protein Families:**

Druggable Genome

**Product images:**

Western blot (WB) analyzes of RNF15 antibody (Cat.-No.: [AP20399PU-N]) in extracts from MCF7 cells.