

Product datasheet for **AP20398PU-N**

FOX E1 Rabbit Polyclonal Antibody

Product data:

Product Type:	Primary Antibodies
Applications:	IHC, WB
Recommended Dilution:	Western Blot: 1/500-1/1000. Immunohistochemistry: 1/50-1/200.
Reactivity:	Human, Mouse, Rat
Host:	Rabbit
Clonality:	Polyclonal
Specificity:	FoxE1 pAb detects endogenous levels of FoxE1 protein. (region surrounding Gln11)
Formulation:	Phosphate buffered saline (PBS) with 0.05% sodium azide, approx. pH 7.2. State: Aff - Purified State: Liquid purified Ig fraction
Concentration:	1.0 mg/ml
Purification:	Affinity-chromatography using epitope-specific immunogen
Conjugation:	Unconjugated
Storage:	Store undiluted at 2-8°C for one month or (in aliquots) at -20°C for longer. Avoid repeated freezing and thawing.
Stability:	Shelf life: one year from despatch.
Predicted Protein Size:	~ 34 kDa
Gene Name:	forkhead box E1
Database Link:	Entrez Gene 110805 Mouse Entrez Gene 192274 Rat Entrez Gene 2304 Human O00358

Background: This intronless gene belongs to the forkhead family of transcription factors, which is characterized by a distinct forkhead domain. This gene functions as a thyroid transcription factor which likely plays a crucial role in thyroid morphogenesis. Mutations in this gene are associated with congenital hypothyroidism and cleft palate with thyroid dysgenesis. The map localization of this gene suggests it may also be a candidate gene for squamous cell epithelioma and hereditary sensory neuropathy type I.

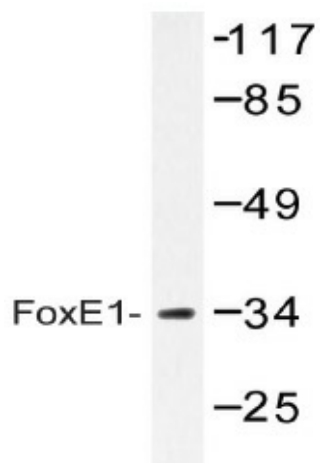


[View online »](#)

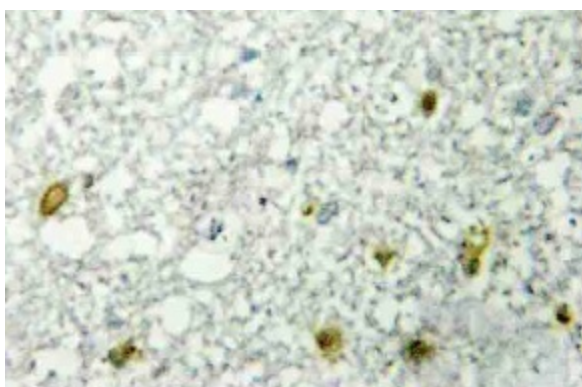
Synonyms: FOXE2, TITF2, TTF2, HFKL5, HFKH4, TTF-2

Protein Families: Druggable Genome, Transcription Factors

Product images:



Western blot (WB) analysis of FoxE1 antibody (Cat.-No.: AP20398PU-N) in extracts from HUVEC cells.



Immunohistochemistry (IHC) analyzes of FoxE1 antibody (Cat.-No.: AP20398PU-N) in paraffin-embedded human RAW264.7 tissue