

Product datasheet for **AP20397PU-N**

ADCY5 (+ADCY6) Rabbit Polyclonal Antibody

Product data:

Product Type:	Primary Antibodies
Applications:	IF, IHC, WB
Recommended Dilution:	Western Blot: 1/500-1/1000. Immunofluorescence: 1/50-1/200. Immunohistochemistry on Paraffin Sections: 1/50-1/200.
Reactivity:	Human, Mouse, Rat
Host:	Rabbit
Clonality:	Polyclonal
Immunogen:	Synthetic peptide, corresponding to amino acids 1111-1160 of Human ADCY 5.
Specificity:	This antibody detects endogenous levels of A Cyclase V/VI protein. (region surrounding Phe1052)
Formulation:	Phosphate buffered saline (PBS), pH 7.2. State: Aff - Purified State: Liquid purified Ig fraction (> 95% pure by SDS-PAGE) Preservative: 0.05% Sodium Azide
Concentration:	1.0 mg/ml
Purification:	Affinity Chromatography using epitope-specific immunogen
Conjugation:	Unconjugated
Storage:	Store undiluted at 2-8°C for one month or (in aliquots) at -20°C for longer. Avoid repeated freezing and thawing.
Stability:	Shelf life: one year from despatch.
Predicted Protein Size:	~ 138 kDa
Gene Name:	adenylate cyclase 5
Database Link:	Entrez Gene 64532 Rat Entrez Gene 224129 Mouse Entrez Gene 111 Human O95622



[View online »](#)

Background:

A cyclase V, also known as ADCY5, is a 1,261 amino acid Adenylyl cyclase that localizes to cellular membranes and contains two guanylate cyclase domains. Similar to other A cyclase proteins, A cyclase V uses magnesium as a cofactor to catalyze the conversion of ATP to cAMP. A cyclase VI, also known as ADCY6 (adenylate cyclase type 6), is a 1,168 amino acid A cyclase that localizes to the membrane and contains two guanylate cyclase domains. Using magnesium as a cofactor, A cyclase VI functions as a calcium-inhibitable A cyclase that catalyzes the conversion of ATP to 3',5'-cyclic AMP and diphosphate and plays a role in a variety of events throughout the body. Multiple isoforms of A cyclase VI exist due to alternative splicing events.

Synonyms:

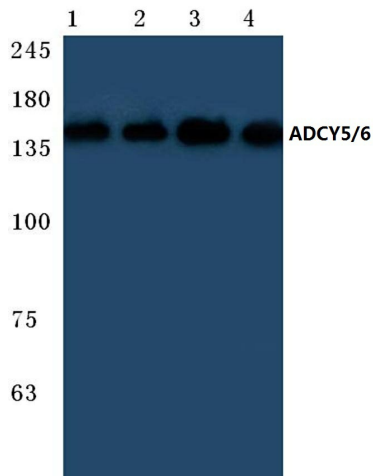
ADCY5, Adenylate cyclase type V, ATP pyrophosphate-lyase 5, Adenylyl cyclase 5

Protein Families:

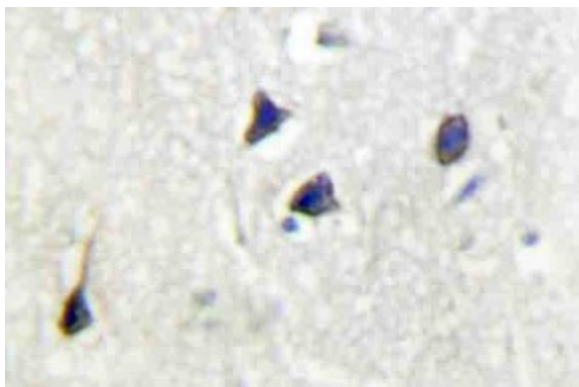
Druggable Genome, Transmembrane

Protein Pathways:

Chemokine signaling pathway, Dilated cardiomyopathy, Gap junction, GnRH signaling pathway, Melanogenesis, Oocyte meiosis, Progesterone-mediated oocyte maturation, Purine metabolism, Vascular smooth muscle contraction

Product images:


Western blot (WB) analysis of ADCY 5/6 antibody at 1/500 dilution Lane 1:Hela cell lysate Lane 2:Raw264.7 cell lysate Lane 3:PC12 cell lysate Lane 4:Rat brain tissue lysate



Immunohistochemistry analysis of A Cyclase V/VI Antibody in paraffin-embedded human brain tissue.