

Product datasheet for **AP20394PU-M**

CSNK1G2 Rabbit Polyclonal Antibody

Product data:

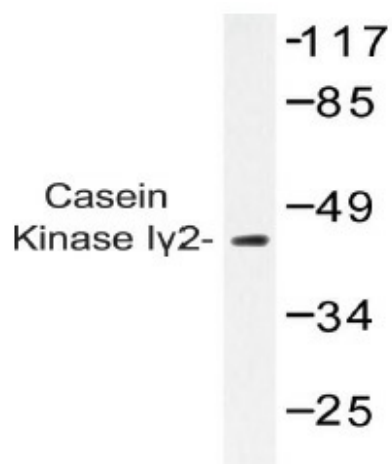
Product Type:	Primary Antibodies
Applications:	IF, IHC, WB
Recommended Dilution:	Western blot: 1/500 - 1/1000. Immunohistochemistry on paraffin sections 1/50 - 1/200. Immunofluorescence: 1/50 - 1/200.
Reactivity:	Human, Mouse, Rat
Host:	Rabbit
Clonality:	Polyclonal
Specificity:	This antibody detects endogenous levels of Casein Kinase Igamma2 protein. (region surrounding Gly7)
Formulation:	Phosphate buffered saline (PBS) with 0.05% sodium azide, approx. pH 7.2. State: Aff - Purified State: Liquid purified Ig fraction
Concentration:	1.0 mg/ml
Purification:	Affinity chromatography (> 95% (by SDS-PAGE)
Conjugation:	Unconjugated
Storage:	Store undiluted at 2-8°C for one month or (in aliquots) at -20°C for longer. Avoid repeated freezing and thawing.
Stability:	Shelf life: one year from despatch.
Predicted Protein Size:	~ 47 kDa
Gene Name:	casein kinase 1 gamma 2
Database Link:	Entrez Gene 65278 Rat Entrez Gene 103236 Mouse Entrez Gene 1455 Human P78368
Background:	Casein kinase 1 gamma 2 (CSNK1G2) is a serine/threonine protein kinase which shows preferential utilization of acidic proteins such as caseins as a substrate. It can phosphorylate a large number of proteins.
Synonyms:	Casein kinase I isoform gamma-2, CKI-gamma 2
Protein Families:	Druggable Genome, Protein Kinase



[View online »](#)

Protein Pathways: Hedgehog signaling pathway

Product images:



Western blot (WB) analysis of Casein Kinase Iγ2 antibody (Cat.-No.: [AP20394PU-N]) in extracts from Hela cells.