

Product datasheet for **AP20392PU-M**

DLX5 Rabbit Polyclonal Antibody

Product data:

Product Type:	Primary Antibodies
Applications:	IF, IHC, WB
Recommended Dilution:	Western blot: 1/500-1/1000. Immunohistochemistry on paraffin sections 1/50-1/200. Immunofluorescence: 1/50-1/200.
Reactivity:	Human, Mouse, Rat
Host:	Rabbit
Clonality:	Polyclonal
Specificity:	This antibody detects endogenous levels of Dlx-5 protein. (region surrounding Glu126)
Formulation:	Phosphate buffered saline (PBS) with 15 mM sodium azide, approx. pH 7.2. State: Aff - Purified State: Liquid purified Ig fraction
Concentration:	1.0 mg/ml
Purification:	Affinity chromatography (> 95% (by SDS-PAGE)
Conjugation:	Unconjugated
Storage:	Store undiluted at 2-8°C for one month or (in aliquots) at -20°C for longer. Avoid repeated freezing and thawing.
Stability:	Shelf life: one year from despatch.
Predicted Protein Size:	~30 kDa
Gene Name:	distal-less homeobox 5
Database Link:	<u>Entrez Gene 13395 Mouse</u> <u>Entrez Gene 25431 Rat</u> <u>Entrez Gene 1749 Human</u> <u>P56178</u>



[View online »](#)

Background:

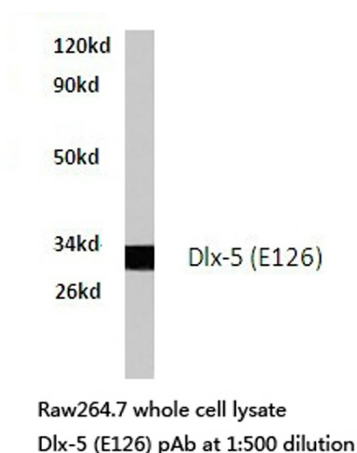
Dlx5 (distal-less homeobox 5) gene is a member of a homeobox gene family similar to the *Drosophila* distal-less gene. The encoded Dlx5 protein is localized to the nucleus where it functions as a transcriptional regulator during neural development. In the developing CNS, Dlx5 is one of the earliest known markers before the formation of an overt neural plate. During late gastrulation Dlx5 (gene) expression becomes localized to the anterior neural ridge, which defines the rostral boundary of the neural plate, and also extends caudolaterally, marking the region of the presumptive neural crest. Subsequently, Dlx5 is expressed in tissues (olfactory epithelium, ventral cephalic epithelium) that are believed to derive from the anterior neural ridge.

Synonyms:

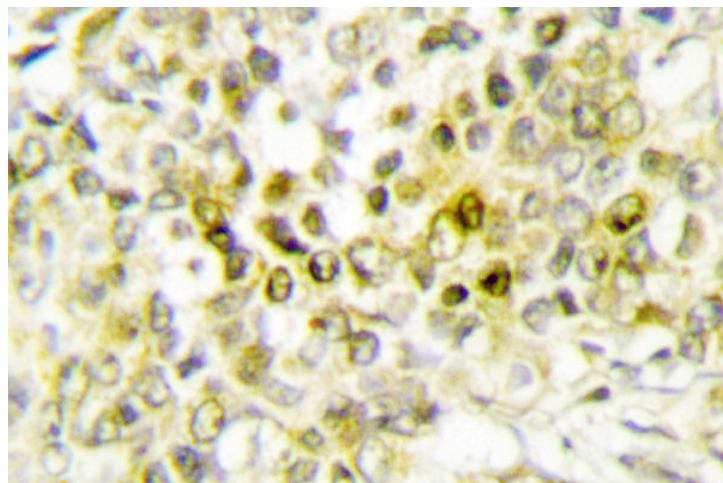
DLX-5, Homeobox protein DLX-5

Protein Families:

ES Cell Differentiation/IPS, Transcription Factors

Product images:


Western blot (WB) analysis of Dlx-5 antibody (Cat.-No.: [AP20392PU-N]) in extracts from raw264.7 cells.



Immunohistochemistry (IHC) analyzes of Dlx-5 antibody (Cat.-No.: [AP20392PU-N]) in paraffin-embedded human lung carcinoma tissue.