

## Product datasheet for **AP20390PU-M**

### ELL Rabbit Polyclonal Antibody

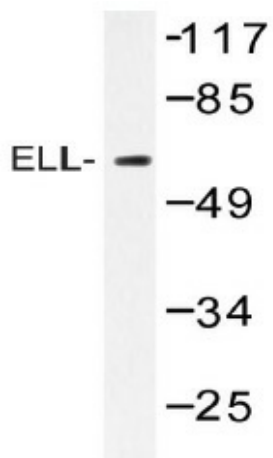
#### Product data:

Product Type:	Primary Antibodies
Applications:	IHC, WB
Recommended Dilution:	<b>Western blot:</b> 1/500-1/1000. <b>Immunohistochemistry on paraffin sections</b> 1/50-1/200.
Reactivity:	Human, Mouse
Host:	Rabbit
Clonality:	Polyclonal
Specificity:	This antibody detects endogenous levels of ELL protein. (region surrounding Asp125)
Formulation:	Phosphate buffered saline (PBS) with 0.05% sodium azide, approx. pH 7.2. State: Aff - Purified State: Liquid purified Ig fraction
Concentration:	1.0 mg/ml
Purification:	Affinity chromatography (> 95% (by SDS-PAGE)
Conjugation:	Unconjugated
Storage:	Store undiluted at 2-8°C for one month or (in aliquots) at -20°C for longer. Avoid repeated freezing and thawing.
Stability:	Shelf life: one year from despatch.
Predicted Protein Size:	~ 65 kDa
Gene Name:	elongation factor for RNA polymerase II
Database Link:	<a href="#">Entrez Gene 13716 Mouse</a> <a href="#">Entrez Gene 8178 Human</a> <a href="#">P55199</a>
Background:	ELL was shown to encode an elongation factor that can increase the catalytic rate of RNA polymerase II transcription by suppressing transient pausing by the polymerase at multiple sites along the DNA. ELL is the second elongation factor to be implicated in oncogenesis.
Synonyms:	C19orf17
Protein Families:	Transcription Factors



[View online »](#)

## Product images:



Western blot (WB) analysis of ELL antibody (Cat. No.: [AP20390PU-N]) in extracts from Jurkat cells.