

## Product datasheet for **AP20389PU-N**

### AF10 (MLLT10) Rabbit Polyclonal Antibody

#### Product data:

Product Type:	Primary Antibodies
Applications:	IF, IHC, WB
Recommended Dilution:	<b>Western blot:</b> 1/500-1/1000. <b>Immunohistochemistry on Paraffin Sections:</b> 1/50-1/200. <b>Immunofluorescence:</b> 1/50-1/200.
Reactivity:	Human, Mouse, Rat
Host:	Rabbit
Clonality:	Polyclonal
Immunogen:	Synthetic peptide corresponding to amino acids 200-250 of Human AF-10.
Specificity:	This antibody detects endogenous levels of AF-10 protein. (region surrounding Glu237)
Formulation:	Phosphate buffered saline (PBS), pH~7.2 State: Aff - Purified State: Liquid purified Ig fraction (> 95% by SDS-PAGE) Preservative: 0.05% Sodium Azide
Concentration:	1.0 mg/ml
Purification:	Immunoaffinity Chromatography
Conjugation:	Unconjugated
Storage:	Store undiluted at 2-8°C for one month or (in aliquots) at -20°C for longer. Avoid repeated freezing and thawing.
Stability:	Shelf life: one year from despatch.
Predicted Protein Size:	~ 109 kDa
Gene Name:	myeloid/lymphoid or mixed-lineage leukemia; translocated to, 10
Database Link:	<a href="#">Entrez Gene 17354 Mouse</a> <a href="#">Entrez Gene 361285 Rat</a> <a href="#">Entrez Gene 8028 Human P55197</a>
Background:	AF10 is a putative transcription factor containing a leucine zipper motif. A t(10;11)(p12;q23) chromosomal translocation present in a proportion of acute myeloid leukaemias results in expression of an AF10 (carboxy terminus) MLL (amino terminus) fusion protein.



[View online »](#)

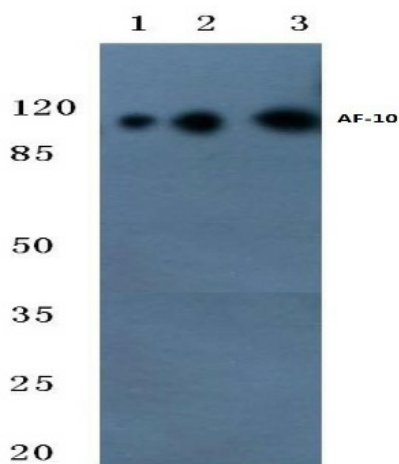
**Synonyms:** AF10; DKFZp686E10210; MGC75086

**Protein Families:** Druggable Genome, Transcription Factors

**Product images:**



Western blot (WB) analysis of AF-10 antibody in extracts from COLO205 cells.



Western blot (WB) analysis of AF-10 antibody at 1/500 dilution. Lane 1: HeLa cell lysate. Lane 2: Mouse testis tissue lysate. Lane 3: Rat testis tissue lysate.