

Product datasheet for **AP20386PU-M**

LIM Kinase 1 (LIMK1) Rabbit Polyclonal Antibody

Product data:

Product Type:	Primary Antibodies
Applications:	IF, IHC, WB
Recommended Dilution:	Western blot: 1/500 - 1/1000. Immunohistochemistry on paraffin sections: 1/50 - 1/200. Immunofluorescence: 1/50 - 1/200.
Reactivity:	Human, Mouse, Rat
Host:	Rabbit
Clonality:	Polyclonal
Specificity:	This antibody detects endogenous levels of LIMK-1 protein. (region surrounding Gln491)
Formulation:	PBS, pH 7.2 containing 0.05% sodium azide as preservative State: Aff - Purified State: Liquid purified Ig fraction
Concentration:	1.0 mg/ml
Purification:	Affinity chromatography (> 95% (by SDS-PAGE)
Conjugation:	Unconjugated
Storage:	Store undiluted at 2-8°C for one month or (in aliquots) at -20°C for longer. Avoid repeated freezing and thawing.
Stability:	Shelf life: one year from despatch.
Predicted Protein Size:	~ 72 kDa
Gene Name:	LIM domain kinase 1
Database Link:	<u>Entrez Gene 16885 Mouse</u> <u>Entrez Gene 65172 Rat</u> <u>Entrez Gene 3984 Human</u> <u>P53667</u>



[View online »](#)

Background:

There are approximately 40 known eukaryotic LIM proteins, so named for the LIM domains they contain. LIM domains are highly conserved cysteine rich structures containing 2 zinc fingers. Although zinc fingers usually function by binding to DNA or RNA, the LIM motif probably mediates protein-protein interactions. LIM kinase 1 and LIM kinase 2 belong to a small subfamily with a unique combination of 2 N-terminal LIM motifs and a C-terminal protein kinase domain. LIMK1 is likely to be a component of an intracellular signaling pathway and may be involved in brain development. LIMK1 hemizyosity is implicated in the impaired visuospatial constructive cognition of Williams syndrome. Two splice variant have been identified.

Synonyms:

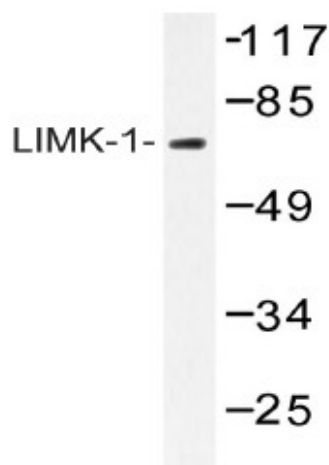
LIMK, LIM domain kinase 1, LIMK-1, EC=2.7.11.1

Protein Families:

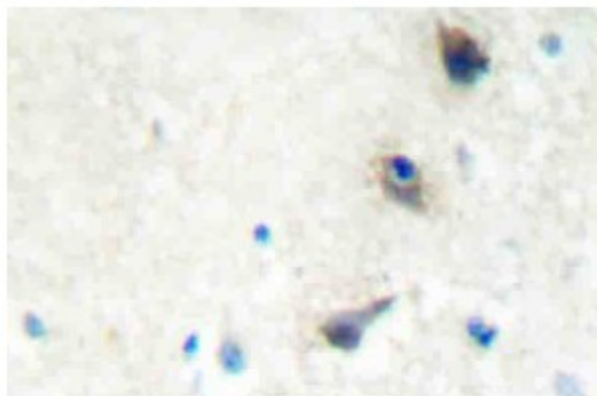
Druggable Genome, Protein Kinase

Protein Pathways:

Axon guidance, Fc gamma R-mediated phagocytosis, Regulation of actin cytoskeleton

Product images:


Western blot (WB) analysis of LIMK-1 antibody (Cat.-No.: [AP20386PU-N]) in extracts from mouse brain.



Immunohistochemistry (IHC) analysis of LIMK-1 antibody (Cat.-No.: [AP20386PU-N]) in paraffin-embedded human brain tissue.