

Product datasheet for **AP20385PU-S**

Ephrin A3 (EFNA3) Rabbit Polyclonal Antibody

Product data:

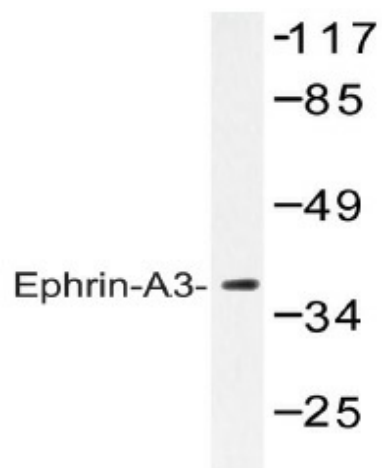
Product Type:	Primary Antibodies
Applications:	IF, IHC, WB
Recommended Dilution:	Western Blot: 1/500-1/1000. Immunofluorescence: 1/50-1/200. Immunohistochemistry on Paraffin Sections: 1/50-1/200.
Reactivity:	Human, Mouse, Rat
Host:	Rabbit
Clonality:	Polyclonal
Specificity:	This antibody detects endogenous levels of Ephrin-A3 protein. (region surrounding Glu196)
Formulation:	Phosphate buffered saline (PBS), pH~7.2 with 0.05% mM Sodium Azide as preservative. State: Aff - Purified State: Liquid purified Ig fraction (> 95% pure by SDS-PAGE).
Concentration:	1.0 mg/ml
Purification:	Affinity Chromatography using epitope-specific immunogen.
Conjugation:	Unconjugated
Storage:	Store undiluted at 2-8°C for one month or (in aliquots) at -20°C for longer. Avoid repeated freezing and thawing.
Stability:	Shelf life: one year from despatch.
Predicted Protein Size:	~ 38 kDa
Gene Name:	ephrin A3
Database Link:	Entrez Gene 13638 Mouse Entrez Gene 170901 Rat Entrez Gene 1944 Human P52797
Background:	The ephrins and EPH-related receptors comprise the largest subfamily of receptor protein-tyrosine kinases and have been implicated in mediating developmental events, especially in the nervous system and in erythropoiesis.
Synonyms:	EFNA3, LERK-3, EHK1 ligand, EHK1-L, EFL-2, EFL2, EPLG3, LERK3
Protein Families:	Druggable Genome



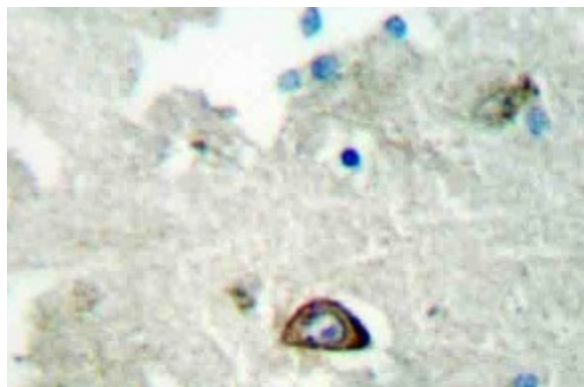
[View online »](#)

Protein Pathways: Axon guidance

Product images:



Western blot (WB) analysis of Ephrin-A3 antibody (Cat.-No.: [AP20385PU-N]) in extracts from HepG2 cells.



Immunohistochemistry (IHC) analyzes of Ephrin-A3 antibody (Cat.-No.: [AP20385PU-N]) in paraffin-embedded human brain tissue.