

Product datasheet for **AP20385PU-M**

Ephrin A3 (EFNA3) Rabbit Polyclonal Antibody

Product data:

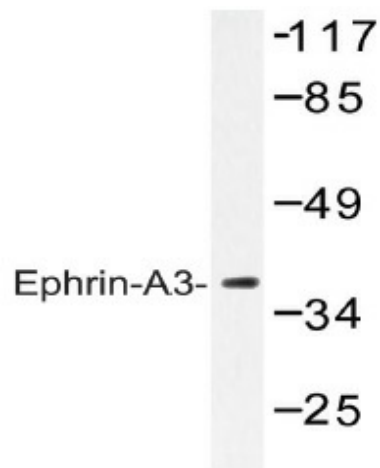
| | |
|-------------------------|---|
| Product Type: | Primary Antibodies |
| Applications: | IF, IHC, WB |
| Recommended Dilution: | Western Blot: 1/500-1/1000. Immunofluorescence: 1/50-1/200. Immunohistochemistry on Paraffin Sections: 1/50-1/200. |
| Reactivity: | Human, Mouse, Rat |
| Host: | Rabbit |
| Clonality: | Polyclonal |
| Specificity: | This antibody detects endogenous levels of Ephrin-A3 protein. (region surrounding Glu196) |
| Formulation: | Phosphate buffered saline (PBS), pH~7.2 with 0.05% mM Sodium Azide as preservative. State: Aff - Purified State: Liquid purified Ig fraction (> 95% pure by SDS-PAGE). |
| Concentration: | 1.0 mg/ml |
| Purification: | Affinity Chromatography using epitope-specific immunogen. |
| Conjugation: | Unconjugated |
| Storage: | Store undiluted at 2-8°C for one month or (in aliquots) at -20°C for longer. Avoid repeated freezing and thawing. |
| Stability: | Shelf life: one year from despatch. |
| Predicted Protein Size: | ~ 38 kDa |
| Gene Name: | ephrin A3 |
| Database Link: | Entrez Gene 13638 Mouse Entrez Gene 170901 Rat Entrez Gene 1944 Human P52797 |
| Background: | The ephrins and EPH-related receptors comprise the largest subfamily of receptor protein-tyrosine kinases and have been implicated in mediating developmental events, especially in the nervous system and in erythropoiesis. |
| Synonyms: | EFNA3, LERK-3, EHK1 ligand, EHK1-L, EFL-2, EFL2, EPLG3, LERK3 |
| Protein Families: | Druggable Genome |



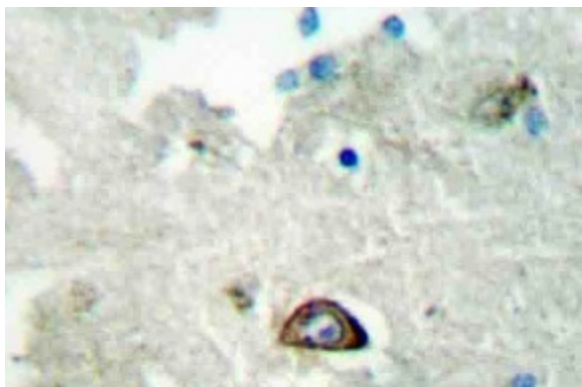
[View online »](#)

Protein Pathways: Axon guidance

Product images:



Western blot (WB) analysis of Ephrin-A3 antibody (Cat.-No.: [AP20385PU-N]) in extracts from HepG2 cells.



Immunohistochemistry (IHC) analyzes of Ephrin-A3 antibody (Cat.-No.: [AP20385PU-N]) in paraffin-embedded human brain tissue.