

## Product datasheet for **AP20384PU-S**

### STAT1 Rabbit Polyclonal Antibody

#### Product data:

Product Type:	Primary Antibodies
Applications:	IHC, WB
Recommended Dilution:	<b>Western Blot:</b> 1/500-1/1000. <b>Immunohistochemistry on paraffin sections:</b> 1/50-1/200.
Reactivity:	Human
Host:	Rabbit
Clonality:	Polyclonal
Specificity:	This antibody detects endogenous levels of Stat1 protein. (region surrounding Leu177)
Formulation:	Phosphate buffered saline (PBS) with 15 mM sodium azide, approx. pH 7.2. State: Aff - Purified State: Liquid purified Ig fraction
Concentration:	1.0 mg/ml
Purification:	Affinity chromatography (> 95% (by SDS-PAGE)
Conjugation:	Unconjugated
Storage:	Store undiluted at 2-8°C for one month or (in aliquots) at -20°C for longer. Avoid repeated freezing and thawing.
Stability:	Shelf life: one year from despatch.
Predicted Protein Size:	~ 87 kDa
Gene Name:	signal transducer and activator of transcription 1
Database Link:	<a href="#">Entrez Gene 6772 Human P42224</a>



[View online »](#)

**Background:**

STATs (signal transducers and activators of transcription) were originally discovered as two proteins (STAT1 and STAT2) which were involved in interferon alpha (IFN alpha) and IFN gamma signal transduction. Since then, several additional STAT proteins have been identified (STAT3, 4, 5, a 5b, and 6). STATs undergo tyrosine phosphorylation in response to growth factor or cytokine signaling. This phosphorylation results in dimerization and translocation of STAT proteins to the nucleus. In some cases this process is mediated by JAK Kinases (Janus Kinases 1, 2, and 3). For maximum activation of these proteins, phosphorylation at specific tyrosine and serine residues may be required in STAT1 alpha, a 3, 4, and 5. Specific functions of the STAT proteins are poorly defined at this time. They are thought to be involved in a variety of systems including antiviral responses and cell transformation.

**Synonyms:**

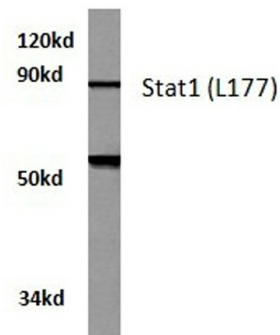
DKFZp686B04100; ISGF-3; OTTHUMP00000205845; STAT91

**Protein Families:**

Druggable Genome, Transcription Factors

**Protein Pathways:**

Chemokine signaling pathway, Jak-STAT signaling pathway, Pancreatic cancer, Pathways in cancer, Toll-like receptor signaling pathway

**Product images:**

HeLa whole cell lysate  
Stat1(L177) pAb at 1:500 dilution

Western blot (WB) analysis of Stat1 antibody (Cat.-No.: [AP20384PU-N]) in extracts from hela cells.