

## Product datasheet for **AP20382PU-N**

### SOX6 Rabbit Polyclonal Antibody

#### Product data:

Product Type:	Primary Antibodies
Applications:	IHC, WB
Recommended Dilution:	<b>Western Blot:</b> 1/500-1/1000. <b>Immunohistochemistry on paraffin sections:</b> 1/50-1/200.
Reactivity:	Human, Mouse, Rat
Host:	Rabbit
Clonality:	Polyclonal
Specificity:	This antibody detects endogenous levels of Sox-6 protein. (region surrounding Asp23)
Formulation:	Phosphate buffered saline (PBS) with 0.05% sodium azide, approx. pH 7.2. State: Aff - Purified State: Liquid purified Ig fraction
Concentration:	1.0 mg/ml
Purification:	Affinity chromatography (> 95% (by SDS-PAGE)
Conjugation:	Unconjugated
Storage:	Store undiluted at 2-8°C for one month or (in aliquots) at -20°C for longer. Avoid repeated freezing and thawing.
Stability:	Shelf life: one year from despatch.
Predicted Protein Size:	~ 91 kDa
Gene Name:	SRY-box 6
Database Link:	<a href="#">Entrez Gene 20679 Mouse</a> <a href="#">Entrez Gene 293165 Rat</a> <a href="#">Entrez Gene 55553 Human</a> <a href="#">P35712</a>



[View online »](#)

**Background:**

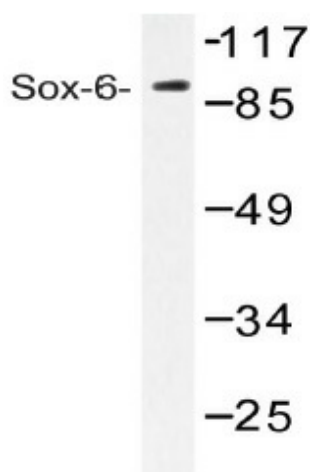
Sox genes comprise a family of genes that are related to the mammalian sex determining gene SRY. These genes similarly contain sequences that encode for the HMG-box domain, which is responsible for the sequence-specific DNA-binding activity. Sox genes encode putative transcriptional regulators implicated in the decision of cell fates during development and the control of diverse developmental processes. The highly complex group of Sox genes cluster at a minimum of 40 different loci that rapidly diverged in various animal lineages. At present 30 Sox genes have been identified, and members of this family have been shown to be conserved during evolution and to play key roles during animal development. Some are involved in human diseases, including sex reversal.

**Synonyms:**

Transcription factor SOX-6, SRY-box 6, HSSOX6, SOXD

**Protein Families:**

Transcription Factors

**Product images:**


Western blot (WB) analysis of Sox-6 antibody (Cat.-No.: AP20382PU-N) in extracts from Jurkat cells.