

Product datasheet for **AP20378PU-N**

Ephrin A1 (EFNA1) Rabbit Polyclonal Antibody

Product data:

Product Type:	Primary Antibodies
Applications:	IF, IHC, WB
Recommended Dilution:	Western blot: 1/500-1/1000. Immunofluorescence: 1/50-1/200. Immunohistochemistry on Paraffin Sections: 1/50-1/200.
Reactivity:	Human, Mouse, Rat
Host:	Rabbit
Clonality:	Polyclonal
Immunogen:	Synthetic peptide, corresponding to amino acids 70-120 of Human Ephrin-A1.
Specificity:	This antibody detects endogenous levels of Ephrin-A1 protein.
Formulation:	PBS, pH~7.2 with 50% Glycerol State: Aff - Purified State: Liquid purified Ig fraction (> 95% pure by SDS-PAGE) Preservative: 0.02% Sodium Azide
Concentration:	1.0 mg/ml
Purification:	Affinity Chromatography using epitope-specific immunogen
Conjugation:	Unconjugated
Storage:	Store undiluted at 2-8°C for one month or (in aliquots) at -20°C for longer. Avoid repeated freezing and thawing.
Stability:	Shelf life: one year from despatch.
Predicted Protein Size:	~ 23 kDa
Gene Name:	ephrin A1
Database Link:	<u>Entrez Gene 13636 Mouse</u> <u>Entrez Gene 94268 Rat</u> <u>Entrez Gene 1942 Human P20827</u>



[View online »](#)

Background:

The Eph subfamily represents the largest group of receptor protein kinases identified to date. There is increasing evidence that Eph family members are involved in central nervous system function and in development. Ligands for Eph receptors include ephrin-A1 (LERK-1/B61), identified as a ligand for the EphA2 (Eck) receptor; ephrin-A2 (ELF-1), identified as a ligand for the EphA3 and EphA4 (Sek) receptors; ephrin-A3 (LERK-3), identified as a ligand for EphA5 (Ehk1) and EphA3 (Hek) receptors; ephrin-A4 (LERK-4), identified as a ligand for the EphA3 receptor; ephrin-A5 (AL-1), identified as a ligand for EphA5 (REK7); ephrin-B1 (LERK-2), identified as a ligand for the EphB1 (Elk) and EphB2 (Cek5) receptors; ephrin-B2 (LERK-5), identified as a ligand for the EphB1, EphB3 (Cek10) and EphB2 receptors; and ephrin-B3 (LERK-8), identified as a ligand for EphB1.

Synonyms:

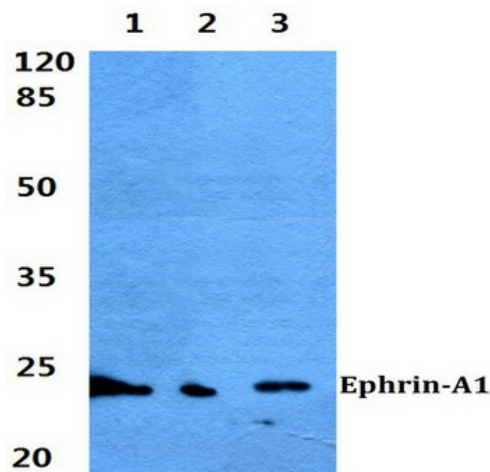
EFNA1, LERK-1, EPLG1, LERK1, TNFAIP4

Protein Families:

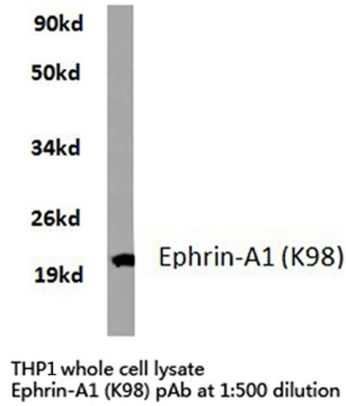
Druggable Genome

Protein Pathways:

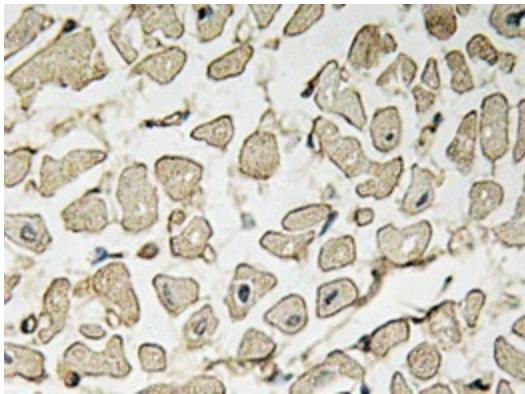
Axon guidance

Product images:

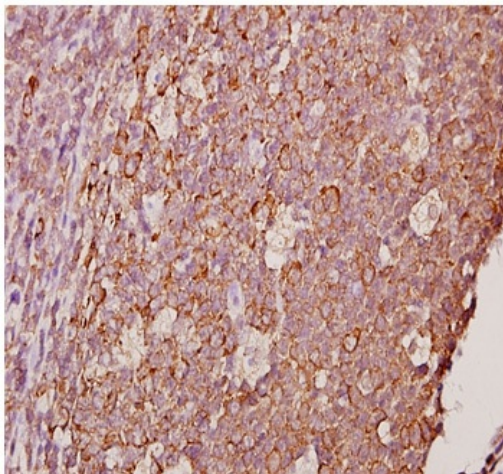
Western blot (WB) analyzes of Ephrin-A1 antibody in extracts from THP1 cells.



Western blot (WB) analyzes of Ephrin-A1 antibody at 1/500 dilution. Lane 1: Jurkat cell lysate. Lane 2: Rat spleen tissue lysate. Lane 3: Mouse spleen tissue lysate.



Immunohistochemistry analyzes of Ephrin-A1 antibody in paraffin-embedded human heart tissue.



Immunohistochemistry analyzes of Ephrin-A1 antibody in paraffin-embedded human tonsil carcinoma tissue at 1/50.