

## Product datasheet for **AP20375PU-M**

### CKII alpha (CSNK2A1) Rabbit Polyclonal Antibody

#### Product data:

Product Type:	Primary Antibodies
Applications:	IHC, WB
Recommended Dilution:	<b>Western blot:</b> 1/500-1/1000. <b>Immunohistochemistry on paraffin sections:</b> 1/50-1/200.
Reactivity:	Human, Mouse, Rat
Host:	Rabbit
Clonality:	Polyclonal
Specificity:	This antibody detects endogenous levels of CKII- $\alpha$ protein.
Formulation:	Phosphate buffered saline (PBS) with 0.05% sodium azide, approx. pH 7.2 State: Aff - Purified State: Liquid purified Ig fraction
Concentration:	1.0 mg/ml
Purification:	Affinity-chromatography using epitope-specific immunogen; purity is > 95% (by SDS-PAGE)
Conjugation:	Unconjugated
Storage:	Store undiluted at 2-8°C for one month or (in aliquots) at -20°C for longer. Avoid repeated freezing and thawing.
Stability:	Shelf life: one year from despatch.
Predicted Protein Size:	~ 45 kDa
Gene Name:	casein kinase 2 alpha 1
Database Link:	<a href="#">Entrez Gene 12995 Mouse</a> <a href="#">Entrez Gene 116549 Rat</a> <a href="#">Entrez Gene 1457 Human</a> <a href="#">P68400</a>



[View online »](#)

**Background:**

Casein kinase I (also designated CKI) and casein kinase II (also designated CKII) compose a family of serine/ threonine protein kinases which are present in all eukaryotes examined to date. CKI family members, which include CKI $\alpha$ ,  $\gamma$ ,  $\epsilon$  and  $\delta$ , have been implicated in the control of cytoplasmic and nuclear processes, including DNA replication and repair. CKII is usually expressed as a tetrameric complex consisting of either an  $\alpha_2\beta_2$  or an  $\alpha\alpha'\beta_2$  structure. The  $\alpha$  catalytic subunit is stimulated by the  $\beta$  regulatory subunit, which undergoes autophosphorylation. CKII activity is high in the cytosol and nucleus of proliferating and differentiating cells. CKII is known to phosphorylate more than 100 different substrates including nuclear oncoproteins, transcription factors and enzymes involved in DNA metabolism.

**Synonyms:**

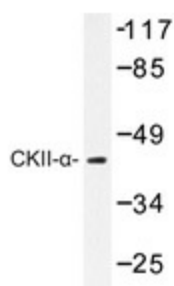
CSNK2A1, CK2A1, CK II alpha

**Protein Families:**

Druggable Genome, ES Cell Differentiation/IPS, Protein Kinase

**Protein Pathways:**

Adherens junction, Tight junction, Wnt signaling pathway

**Product images:**


Western blot analysis of CKII- $\alpha$  antibody ([AP20375PU-NJ]) in extracts from HeLa cells.