

## Product datasheet for **AP20374PU-M**

### p27 KIP 1 (CDKN1B) Rabbit Polyclonal Antibody

#### Product data:

Product Type:	Primary Antibodies
Applications:	WB
Recommended Dilution:	<b>Western blot:</b> 1/500-1/1000.
Reactivity:	Human
Host:	Rabbit
Clonality:	Polyclonal
Specificity:	This antibody detects endogenous levels of p27 protein.
Formulation:	Phosphate buffered saline (PBS) with 0.05% sodium azide, approx. pH 7.2 State: Aff - Purified State: Liquid purified Ig fraction
Concentration:	1.0 mg/ml
Purification:	Affinity-chromatography using epitope-specific immunogen; purity is > 95% (by SDS-PAGE)
Conjugation:	Unconjugated
Storage:	Store undiluted at 2-8°C for one month or (in aliquots) at -20°C for longer. Avoid repeated freezing and thawing.
Stability:	Shelf life: one year from despatch.
Predicted Protein Size:	~ 27 kDa
Gene Name:	cyclin-dependent kinase inhibitor 1B
Database Link:	<a href="#">Entrez Gene 1027 Human</a> <a href="#">P46527</a>

[View online »](#)

**Background:**

Cell cycle progression is regulated by a series of cyclin-dependent kinases that consist of catalytic subunits, designated Cdk, and activating subunits designated cyclins. Orderly progression through the cell cycle requires the activation and inactivation of different cyclin-Cdk at appropriate times. A series of proteins has been recently described that function as “mitotic inhibitors.” These include p21, the levels of which are elevated upon DNA damage in G1 in a p53-dependent manner, p16 and a more recently described p16 related inhibitor designated p15. A p21 related protein, p27, has been described as a negative regulator of G1 progression and has been speculated to function as a possible mediator of TGFβ-induced G1 arrest. p27 interacts strongly with D-type cyclins and Cdk4 in vitro and to a lesser extent with cyclin E and Cdk2.

**Synonyms:**

p27Kip1

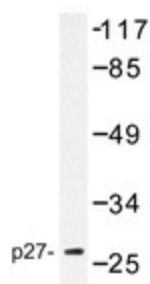
**Protein Families:**

Druggable Genome

**Protein Pathways:**

Cell cycle, Chronic myeloid leukemia, ErbB signaling pathway, Pathways in cancer, Prostate cancer, Small cell lung cancer

**Product images:**



Western blot analysis of p27 antibody (AP20374PU-NJ) in extracts from HeLa cells.