

## Product datasheet for **AP20372PU-M**

### Vimentin (VIM) Rabbit Polyclonal Antibody

#### Product data:

Product Type:	Primary Antibodies
Applications:	IF, IHC, WB
Recommended Dilution:	<b>Western blot:</b> 1/500-1/1000. <b>Immunohistochemistry on paraffin sections:</b> 1/50-1/200. <b>Immunofluorescence:</b> 1/50-1/200.
Reactivity:	Human, Mouse, Rat
Host:	Rabbit
Clonality:	Polyclonal
Specificity:	This antibody detects endogenous levels of Vimentin protein.
Formulation:	Phosphate buffered saline (PBS) with 0.05% sodium azide, approx. pH 7.2 State: Aff - Purified State: Liquid purified Ig fraction
Concentration:	1.0 mg/ml
Purification:	Affinity-chromatography using epitope-specific immunogen; purity is > 95% (by SDS-PAGE)
Conjugation:	Unconjugated
Storage:	Store undiluted at 2-8°C for one month or (in aliquots) at -20°C for longer. Avoid repeated freezing and thawing.
Stability:	Shelf life: one year from despatch.
Predicted Protein Size:	~ 57 kDa
Gene Name:	vimentin
Database Link:	<a href="#">Entrez Gene 22352 Mouse</a> <a href="#">Entrez Gene 81818 Rat</a> <a href="#">Entrez Gene 7431 Human</a> <a href="#">P08670</a>



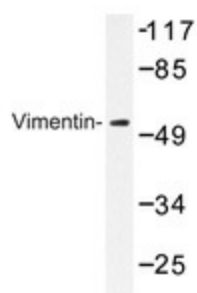
[View online »](#)

**Background:** Cytoskeletal intermediate filaments (IFs) constitute a diverse group of proteins that are expressed in a highly tissue-specific manner. Intermediate filaments are constructed from two-chain,  $\alpha$ -helical, coiled-coil molecules arranged on an imperfect helical lattice and have been widely used as markers for distinguishing individual cell types within a tissue and identifying the origins of metastatic tumors. One such intermediate filament protein, Vimentin, is a general marker of cells originating in the mesenchyme. Vimentin is frequently coexpressed with other members of the intermediate filament family, such as the cytokeratins, in neoplasms including melanoma and breast carcinoma.

**Synonyms:** VIM

**Protein Families:** ES Cell Differentiation/IPS

### Product images:



Western blot analysis of Vimentin antibody ([AP20372PU-N]) in extracts from 293 cells.