

Product datasheet for **AP20368PU-S**

GRP94 (HSP90B1) Rabbit Polyclonal Antibody

Product data:

Product Type:	Primary Antibodies
Applications:	IF, IHC, WB
Recommended Dilution:	Western blot: 1/500-1/1000. Immunofluorescence: 1/50-1/200. Immunohistochemistry on Paraffin Sections: 1/50-1/200.
Reactivity:	Human, Mouse, Rat
Host:	Rabbit
Clonality:	Polyclonal
Specificity:	This antibody detects endogenous levels of HSP90B protein.
Formulation:	Phosphate buffered saline (PBS), pH~7.2 containing 15 mM Sodium Azide as preservative State: Aff - Purified State: Liquid purified Ig fraction (> 95% pure by SDS-PAGE)
Concentration:	1.0 mg/ml
Purification:	Affinity Chromatography using epitope-specific immunogen
Conjugation:	Unconjugated
Storage:	Store the antibody undiluted at 2-8°C for one month or (in aliquots) at -20°C for longer. Avoid repeated freezing and thawing.
Stability:	Shelf life: one year from despatch.
Predicted Protein Size:	~ 90 kDa
Gene Name:	heat shock protein 90kDa beta family member 1
Database Link:	Entrez Gene 22027 Mouse Entrez Gene 362862 Rat Entrez Gene 7184 Human P14625



[View online »](#)

Background:

The 90-kDa heat shock protein (Hsp90) is a highly conserved, and abundant cytosolic homodimeric molecular chaperone. Hsp90 is distinguished from other chaperones in that most of its known substrates are signal transduction proteins, non activated steroid hormone receptors, several protooncogenic tyrosine and serine/threonine kinases and actin. Two isoforms which correspond to the major and minor isoform, (Hsp90 alpha and Hsp90 beta) can be found in nearly equal amount in humans, and operates as part of a multichaperone machinery in the cytosol, which includes Hsp70, peptidyl-prolyl isomerases and other cochaperones.

Synonyms:

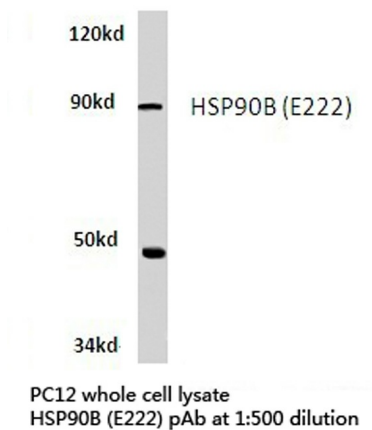
Tumor rejection antigen 1, GRP94

Protein Families:

Druggable Genome

Protein Pathways:

NOD-like receptor signaling pathway, Pathways in cancer, Prostate cancer

Product images:

Western blot (WB) analysis of HSP90B antibody (Cat.-No.: [AP20368PU-N]) in extracts from PC12 cells.