

Product datasheet for **AP20367PU-M**

Casein Kinase 1 alpha (CSNK1A1) Rabbit Polyclonal Antibody

Product data:

Product Type:	Primary Antibodies
Applications:	IF, IHC, WB
Recommended Dilution:	Western blot: 1/500-1/1000. Immunohistochemistry on paraffin sections: 1/50-1/200. Immunofluorescence: 1/50-1/200.
Reactivity:	Human, Mouse, Rat
Host:	Rabbit
Clonality:	Polyclonal
Specificity:	This antibody detects endogenous levels of Casein Kinase I α protein.
Formulation:	Phosphate buffered saline (PBS) with 0.05% sodium azide, approx. pH 7.2 State: Aff - Purified State: Liquid purified Ig fraction
Concentration:	1.0 mg/ml
Purification:	Affinity-chromatography using epitope-specific immunogen; purity is > 95% (by SDS-PAGE)
Conjugation:	Unconjugated
Storage:	Store undiluted at 2-8°C for one month or (in aliquots) at -20°C for longer. Avoid repeated freezing and thawing.
Stability:	Shelf life: one year from despatch.
Predicted Protein Size:	~ 35 kDa
Gene Name:	casein kinase 1 alpha 1
Database Link:	Entrez Gene 93687 Mouse Entrez Gene 113927 Rat Entrez Gene 1452 Human P48729



[View online »](#)

Background:

Casein kinase I (also designated CKI) and casein kinase II (CKII) compose a family of serine/threonine protein kinases which are present in all eukaryotes examined to date. Casein kinase I family members, which include casein kinase I α , I γ , I δ and I ϵ , have been implicated in the control of cytoplasmic and nuclear processes, including DNA replication and repair. CKII is usually expressed as a tetrameric complex consisting of either an $\alpha 2\beta 2$ or an $\alpha\alpha'\beta 2$ structure. The α catalytic subunit is stimulated by the β regulatory subunit, which undergoes autophosphorylation. Casein kinase II activity is high in the cytosol and nucleus of proliferating and differentiating cells. Casein kinase II is known to phosphorylate more than 100 different substrates including nuclear oncoproteins, transcription factors and enzymes involved in DNA metabolism.

Synonyms:

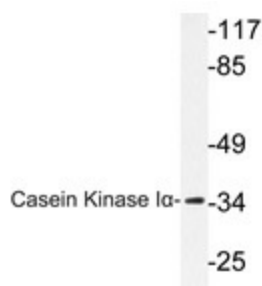
Casein kinase I alpha, CKI-alpha, CK1

Protein Families:

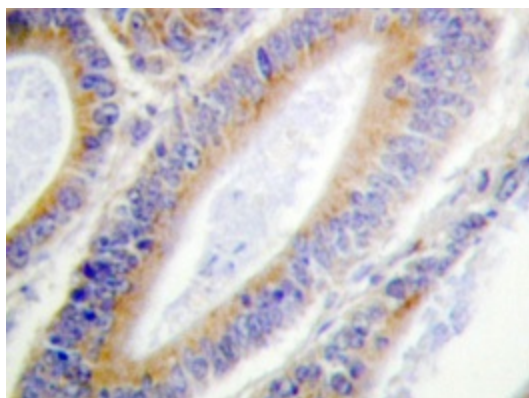
Druggable Genome, ES Cell Differentiation/IPS, Protein Kinase

Protein Pathways:

Hedgehog signaling pathway, Wnt signaling pathway

Product images:


Western blot analysis of Casein Kinase I α antibody (Cat.-No.: [AP20367PU-N]) in extracts from HuvEc cells.



Immunohistochemistry analyzes of Casein Kinase I α antibody (Cat.-No.: [AP20367PU-N]) in paraffin-embedded human colon carcinoma tissue.