

Product datasheet for **AP20364PU-N**

NEK9 Rabbit Polyclonal Antibody

Product data:

Product Type:	Primary Antibodies
Applications:	IF, WB
Recommended Dilution:	Western blot: 1/500-1/1000. Immunofluorescence: 1/50-1/200.
Reactivity:	Human, Mouse, Rat
Host:	Rabbit
Clonality:	Polyclonal
Specificity:	This antibody detects endogenous levels of Nek9 protein.
Formulation:	Phosphate buffered saline (PBS), pH~7.2 containing 0.05% Sodium Azide as preservative. State: Aff - Purified State: Liquid purified Ig fraction (> 95% pure by SDS-PAGE).
Concentration:	1.0 mg/ml
Purification:	Affinity Chromatography using epitope-specific immunogen.
Conjugation:	Unconjugated
Storage:	Store the antibody undiluted at 2-8°C for one month or (in aliquots) at -20°C for longer. Avoid repeated freezing and thawing.
Stability:	Shelf life: One year from despatch.
Predicted Protein Size:	~107.0 kDa
Gene Name:	NIMA related kinase 9
Database Link:	Entrez Gene 217718 Mouse Entrez Gene 299204 Rat Entrez Gene 91754 Human Q8TD19



[View online »](#)

Background:

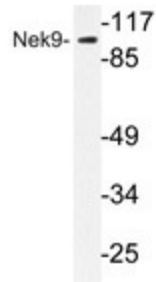
Nek8 (also designated never in mitosis A (NimA)-related kinase 8, Jck and NEK12A) is a mitotic regulator that plays a significant role in maintaining renal tubular integrity. Nek8 transcript is abundant in thyroid, adrenal gland and skin, with overexpression in breast tumors and infiltrating ductal carcinomas, and moderate levels in mucinous adenocarcinoma. Nek8 mutations correlate to juvenile autosomal recessive polycystic kidney disease in humans. Nek9 (never in mitosis A (NimA)-related kinase 9, Nercc1 kinase) regulates G1/S transition and S phase progression by influencing spindle dynamics and chromosome separation. Nek9 phosphorylates different histones (Histone H3 on serine and threonine), myelin basic protein, β -casein (serine) and BICD2. Nek9 interacts with Ran GTPase, Nek6, Nek7, BICD2, SSRP1 and SUPT16H/ FACT complex. Nek9 transcript is abundant in heart, liver, kidney and testis. Nek family cell-cycle protein kinases in humans have at least 11 members that share an amino-terminal catalytic domain related to NIMA, an *Aspergillus nidulans* kinase that plays on several aspects of mitosis, with divergent carboxyl-terminal tails of varying length.

Synonyms:

Never in mitosis A-related kinase 9, Nercc1 kinase, KIAA1995, NEK8, NERCC

Protein Families:

Druggable Genome, Protein Kinase

Product images:

Western blot analysis of Nek9 antibody (AP20364PU-N) in extracts from A549 cells.