

Product datasheet for **AP20363PU-N**

IKK gamma (IKBKG) Rabbit Polyclonal Antibody

Product data:

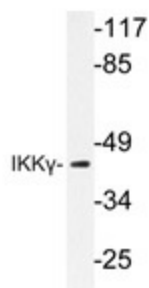
Product Type:	Primary Antibodies
Applications:	IF, IHC, WB
Recommended Dilution:	Western blot: 1/500-1/1000. Immunohistochemistry on paraffin sections: 1/50-1/200. Immunofluorescence: 1/50-1/200.
Reactivity:	Human
Host:	Rabbit
Clonality:	Polyclonal
Specificity:	This antibody detects endogenous levels of IKKy protein.
Formulation:	Phosphate buffered saline (PBS) with 0.05% sodium azide, approx. pH 7.2. State: Aff - Purified State: Liquid purified Ig fraction
Concentration:	1.0 mg/ml
Purification:	Affinity-chromatography using epitope-specific immunogen; purity is > 95% (by SDS-PAGE)
Conjugation:	Unconjugated
Storage:	Store undiluted at 2-8°C for one month or (in aliquots) at -20°C for longer. Avoid repeated freezing and thawing.
Stability:	Shelf life: one year from despatch.
Predicted Protein Size:	~ 48 kDa
Gene Name:	inhibitor of kappa light polypeptide gene enhancer in B-cells, kinase gamma
Database Link:	Entrez Gene 8517 Human Q9Y6K9



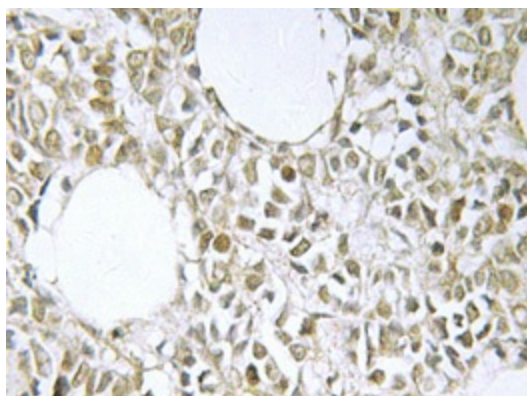
[View online »](#)

- Background:** The transcription factor NF κ B is retained in the cytoplasm in an inactive form by the inhibitory protein I κ B. Activation of NF κ B requires that I κ B be phosphorylated on specific serine residues, which results in targeted degradation of I κ B. I κ B kinase α (IKK α), previously designated CHUK, interacts with I κ B α and specifically phosphorylates I κ B α on Serine 32 and 36, the sites that trigger its degradation. IKK α appears to be critical for NF κ B activation in response to proinflammatory cytokines. Phosphorylation of I κ B by IKK α is stimulated by the NF κ B inducing kinase (NIK), which itself is a central regulator for NF κ B activation in response to TNF and IL-1. The functional IKK complex contains three subunits, IKK α , IKK β and IKK γ (also designated NEMO), and each appear to make essential contributions to I κ B phosphorylation.
- Synonyms:** FIP3, FIP-3, IKKAP1, I-kappa-B kinase subunit gamma, IKK-gamma, IKKG, I κ B kinase subunit gamma
- Protein Families:** Druggable Genome, Transcription Factors
- Protein Pathways:** Acute myeloid leukemia, Adipocytokine signaling pathway, Apoptosis, B cell receptor signaling pathway, Chemokine signaling pathway, Chronic myeloid leukemia, Cytosolic DNA-sensing pathway, Epithelial cell signaling in Helicobacter pylori infection, MAPK signaling pathway, NOD-like receptor signaling pathway, Pancreatic cancer, Pathways in cancer, Primary immunodeficiency, Prostate cancer, RIG-I-like receptor signaling pathway, Small cell lung cancer, T cell receptor signaling pathway, Toll-like receptor signaling pathway

Product images:



Western blot analysis of IKK γ antibody (AP20363PU-N) in extracts from HepG2 cells.



Immunohistochemistry analyzes of IKK γ antibody (AP20363PU-N) in paraffin-embedded human breast carcinoma tissue.