

## Product datasheet for **AP20361PU-M**

### SMAD2 Rabbit Polyclonal Antibody

#### Product data:

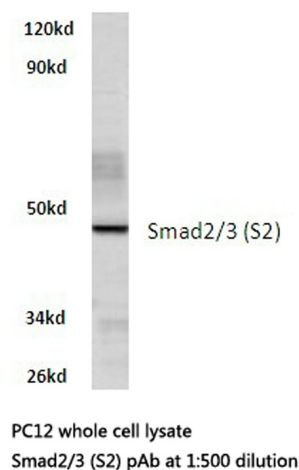
Product Type:	Primary Antibodies
Applications:	IHC, WB
Recommended Dilution:	<b>Western blot:</b> 1/500-1/1000. <b>Immunohistochemistry on paraffin sections:</b> 1/50-1/200.
Reactivity:	Human, Mouse, Rat
Host:	Rabbit
Clonality:	Polyclonal
Specificity:	This antibody detects endogenous levels of Smad2/3 protein.
Formulation:	Phosphate buffered saline (PBS) with 15 mM sodium azide, approx. pH 7.2 State: Aff - Purified State: Liquid purified Ig fraction
Concentration:	1.0 mg/ml
Purification:	Affinity-chromatography using epitope-specific immunogen; purity is > 95% (by SDS-PAGE)
Conjugation:	Unconjugated
Storage:	Store undiluted at 2-8°C for one month or (in aliquots) at -20°C for longer. Avoid repeated freezing and thawing.
Stability:	Shelf life: one year from despatch.
Predicted Protein Size:	~ 55,60 kDa
Gene Name:	SMAD family member 2
Database Link:	<a href="#">Entrez Gene 17126 Mouse</a> <a href="#">Entrez Gene 29357 Rat</a> <a href="#">Entrez Gene 4087 Human</a> <a href="#">Q15796</a>



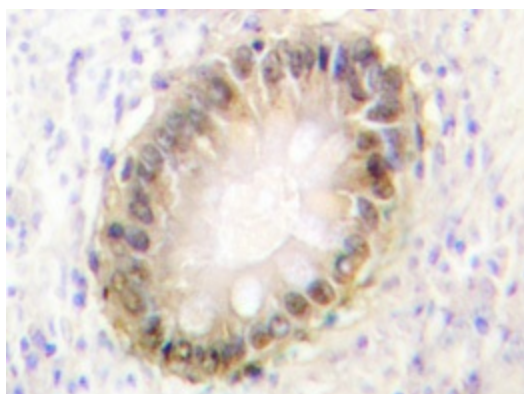
[View online »](#)

<b>Background:</b>	Smad proteins, the mammalian homologs of the Drosophila mothers against decapentaplegic (Mad), have been implicated as downstream effectors of $\text{GF}\beta$ /BMP signaling. Smad1 (also designated Madr1 or JV4-1) and Smad5 are effectors of BMP-2 and BMP-4 function, while Smad2 (also designated Madr2 or JV18-1) and Smad3 are involved in $\text{TGF}\beta$ and activin-mediated growth modulation. Smad4 (also designated DPC4) has been shown to mediate all of the above activities through interaction with various Smad family members. Smad6 and Smad7 regulate the response to activin/ $\text{TGF}\beta$ signaling by interfering with $\text{TGF}\beta$ -mediated phosphorylation of other Smad proteins.
<b>Synonyms:</b>	SMAD family member 2, SMAD-2, SMAD 2, MADH2, MAD homolog 2, MADR2, Mad-related protein 2, JV18-1
<b>Protein Families:</b>	Cancer stem cells, Druggable Genome, Embryonic stem cells, ES Cell Differentiation/IPS, Stem cell relevant signaling - JAK/STAT signaling pathway, Stem cell relevant signaling - $\text{TGF}\beta$ /BMP signaling pathway, Transcription Factors
<b>Protein Pathways:</b>	Adherens junction, Cell cycle, Colorectal cancer, Pancreatic cancer, Pathways in cancer, $\text{TGF}$ -beta signaling pathway, Wnt signaling pathway

## Product images:



Western blot (WB) analysis of Smad2/3 antibody (Cat.-No.: [AP20361PU-N]) in extracts from PC12 cells.



Immunohistochemistry analyzes of Smad2/3 antibody ([AP20361PU-N]) in paraffin-embedded human colon carcinoma tissue.