

## Product datasheet for **AP20358PU-N**

### Cytokeratin 18 (KRT18) Rabbit Polyclonal Antibody

#### Product data:

Product Type:	Primary Antibodies
Applications:	IF, IHC, WB
Recommended Dilution:	<b>Western blot:</b> 1/500-1/1000. <b>Immunofluorescence:</b> 1/50-1/200. <b>Immunohistochemistry on Paraffin Sections:</b> 1/50-1/200.
Reactivity:	Human
Host:	Rabbit
Clonality:	Polyclonal
Specificity:	This antibody detects endogenous levels of Cytokeratin 18 protein.
Formulation:	Phosphate buffered saline (PBS) pH~7.2 containing 0.05% Sodium Azide as preservative State: Aff - Purified State: Liquid purified Ig fraction (> 95% pure by SDS-PAGE)
Concentration:	1.0 mg/ml
Purification:	Affinity Chromatography using epitope-specific immunogen
Conjugation:	Unconjugated
Storage:	Store the antibody undiluted at 2-8°C for one month or (in aliquots) at -20°C for longer. Avoid repeated freezing and thawing.
Stability:	Shelf life: one year from despatch.
Predicted Protein Size:	~ 46 kDa
Gene Name:	keratin 18
Database Link:	<a href="#">Entrez Gene 3875 Human P05783</a>



[View online »](#)

**Background:**

Cytokeratins comprise a diverse group of intermediate filament proteins (IFPs) that are expressed as pairs in both keratinized and non-keratinized epithelial tissue. Cytokeratins play a critical role in differentiation and tissue specialization and function to maintain the overall structural integrity of epithelial cells. Cytokeratins have been found to be useful markers of tissue differentiation which is directly applicable to the characterization of malignant tumors. For example, Cytokeratins 10 and 13 are expressed highly in a subset of squamous cell carcinomas while Cytokeratin 18 is expressed in a majority of adenocarcinomas and basal cell carcinomas. Cytokeratin 18 contains two major phosphorylation sites on Ser 33 and Ser 52. Phosphorylation of Ser 18 is essential for the association of cytokeratin 18 with 14-3-3 proteins and is involved in keratin organization and distribution.

**Synonyms:**

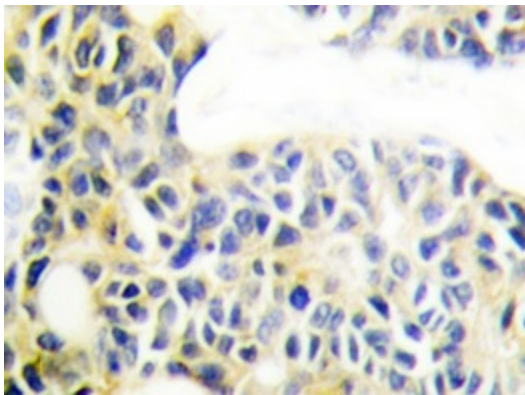
Cytokeratin-18, CK18, Keratin-18, Keratin 18, KRT18, CYK18, K18

**Protein Pathways:**

Pathogenic Escherichia coli infection

**Product images:**


Western blot analysis of Cytokeratin 18 antibody (Cat.-No.: AP20358PU-N) in extracts from HuvEc cells.



Immunohistochemistry analyzes of Cytokeratin 18 antibody (Cat.-No.: AP20358PU-N) in paraffin-embedded human breast carcinoma tissue.