

Product datasheet for **AP20356PU-N**

CDC25A Rabbit Polyclonal Antibody

Product data:

| | |
|-------------------------|--|
| Product Type: | Primary Antibodies |
| Applications: | WB |
| Recommended Dilution: | Western blot: 1/500-1/1000. |
| Reactivity: | Human, Mouse, Rat |
| Host: | Rabbit |
| Clonality: | Polyclonal |
| Specificity: | This antibody detects endogenous levels of Cdc25A protein. |
| Formulation: | Phosphate buffered saline (PBS) with 0.05% sodium azide, approx. pH 7.2 State: Aff - Purified State: Liquid purified Ig fraction |
| Concentration: | 1.0 mg/ml |
| Purification: | Affinity-chromatography using epitope-specific immunogen; purity is > 95% (by SDS-PAGE) |
| Conjugation: | Unconjugated |
| Storage: | Store undiluted at 2-8°C for one month or (in aliquots) at -20°C for longer. Avoid repeated freezing and thawing. |
| Stability: | Shelf life: one year from despatch. |
| Predicted Protein Size: | ~ 59 kDa |
| Gene Name: | cell division cycle 25A |
| Database Link: | Entrez Gene 12530 Mouse Entrez Gene 171102 Rat Entrez Gene 993 Human P30304 |



[View online »](#)

Background:

The Cdc2/cyclin B enzyme, involved in regulation of mitosis in eukaryotic cells, is subject to multiple levels of control. Among these, the regulation of the catalytic subunit by tyrosine phosphorylation is the best understood. tyrosine phosphorylation inhibits the Cdc2/cyclin B complex, while tyrosine dephosphorylation, which occurs at the onset of mitosis, directly activates the pre-MPH complex. The Cdc25 gene serves as a rate-limiting mitotic activator, apparently due to its action as the Cdc2 tyrosine phosphatase. In the absence of Cdc25, Cdc2 accumulates in a tyrosine phosphorylated state. In addition, Cdc25 proteins from a variety of species have been shown to share a low degree of sequence similarity with other tyrosine phosphatases. The Cdc25 gene family consists of at least three members that share approximately 40% identity in their most conserved carboxy terminal sequences.

Synonyms:

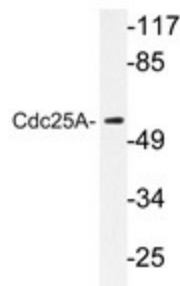
CDC-25A

Protein Families:

Druggable Genome, Phosphatase

Protein Pathways:

Cell cycle, Progesterone-mediated oocyte maturation

Product images:

Western blot analysis of Cdc25A antibody (Cat.-No.: AP20356PU-N) in extracts from HepG2 cells.